



Inspiring – TFL Colour Trends

» Spring-Summer 2024



TFL – Great chemicals. Excellent advice.

Leather is not always the first choice of young consumers. The leather industry needs to adapt itself to this and we have to make the material more attractive again. Because it actually has so many attributes young consumers are looking for: it is sustainable, contributing to circular economy, very durable and has a natural beauty. With the TFL PURE range for example TFL is promoting products that enable real natural leathers – and that feels good. Also further digitalisation – in the leather manufacturing process itself and in marketing the final leather goods - can contribute to make the material more attractive again – also for younger generations.

In this collection TFL is featuring these beneficial characteristics of leather:

- grain elasticity
- anti-ageing finishes
- sustainability and neo-vegetable

The elasticity of the leather can be achieved in the pickling phase by means of new tanning and retanning products and an accurate process. The leather is transformed into an innovative material that keeps its shape, perfect for sheathing complex or aerodynamic shapes that evoke the idea of speed, thereby coining a new term: “fast leather”.

This feeling of wearing a protective second skin also opens doors for new opportunities for the leather clothing industry and revolutionises how designers think having a more attractive, modified material to work with. Just imagine how it would feel to cover yourself with a casing or second skin or be able to change and adapt it to another shape or situation. One day in the future we may enjoy “tapes” made from leather, enabling us to merge material and organism.

Anti-ageing finishes. Vintage, ripped and stained are trends that we have seen repeatedly year after year, but now as part of this great chemical-creative-applicative endeavour we can focus on the concept of relaxing, pleasurable functionality.

Sustainability has become one of the most important topics in our modern world. TFL is constantly upgrading its PURE range based on renewable materials enabling our customers to calculate the bio-content of their recipes.

With regards to tanning, the future vision is that every tannery could be a tiny power plant that throws away nothing and reuses everything, starting by continuously recycling water to even create tanning products that reactivate this material in perpetuity. One step in this direction is the TFL offer of the modular insitu production plant enabling tanneries to upcycle their by-products to bio-stimulants and oil.

THEMES:

- Swimming Pool
- Greatest Balloon
- Formula Gulp
- Folk Auto Speed

Swimming Pool



TARGET:

- Tango pumps.
- Deconstructed bio-leather jacket.
- Embellished metallic nappa dress.



Swimming Pool

↑ **CYBER YELLOW** TPG 14-0760

↑ **ELECTRIC GREEN** TPG 14-5721

↑ **LITTLE BOY BLUE** TPG 16-4132

↑ **RAINY DAY** TPG 13-5304



Swimming Pool

Drum	3,00 %	SELLA® Fast Yellow A
Finishing	0,10	RODA® Lite Blue 07
	1,50	RODA® Lite Ochre 07
	2,50	RODA® Lite Yellow 07
	95,70	RODA® Lite Lemon 07

↑ CYBER YELLOW TPG 14-0760

Drum	1,00 %	SELLASOL® TN-FF liq
	0,50 %	SELLA® Fast Green 2GB
Finishing	29,50	RODA® Lite White 07
	25,00	RODA® Lite Blue 07
	45,00	RODA® Lite Lemon 07
	0,50	RODA® Lite Fuchsia 07

↑ ELECTRIC GREEN TPG 14-5721

Drum	1,00 %	SELLA® Fast Blue A
	0,05 %	SELLA® Fast Bordeaux A
Finishing	45,00	RODA® Lite White 07
	25,00	RODA® Lite Blue 07
	5,00	RODA® Lite Violet Brown 07
	25,00	RODA® Lite Fuchsia 07

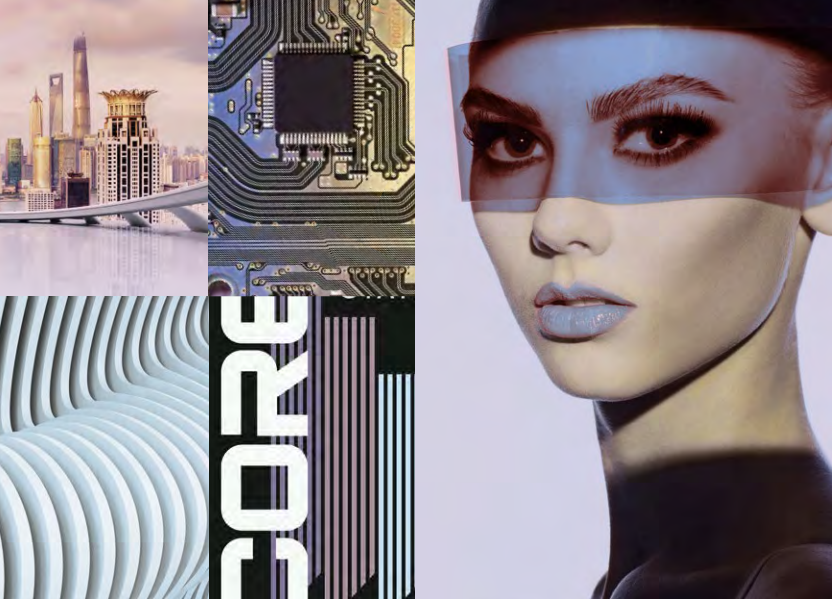
↑ LITTLE BOY BLUE TPG 16-4132

Drum	2,00 %	SELLASOL® TN-FF liq
	0,40 %	SELLA® Fast Grey A
	0,80 %	SELLA® Fast Beige A
Finishing	96,70	RODA® Lite White 07
	0,50	RODA® Lite Black 07
	1,50	RODA® Lite Yellow 07
	1,30	RODA® Lite Violet Brown 07

↑ RAINY DAY TPG 13-5304

All RODA® Lite 07 formulations are applied on no-dyed crust and quantities are expressed in grams per liter.

Greatest Balloon



TARGET:

- Leather sandals with moonstone pendant collar.
- Soft leather tote bag.
- Woven leather luxury bag.



Greatest Balloon

↑ **DEEP PERVINKLE** TPG 17-3932

↑ **PURPLE HEATER** TPG 14-3911

↑ **BALLAD BLUE** TPG 13-4304

↑ **WINTER WHITE** TPG 11-0507



Greatest Balloon

Drum	0,10 %	SELLA® Fast Violet RL
	0,70 %	SELLA® Fast Navy A
Finishing	55,00	RODA® Lite White 07
	35,00	RODA® Lite Blue 07
	1,00	RODA® Lite Violet Brown 07
	9,00	RODA® Lite Fuchsia 07

↑ DEEP PERVINKLE TPG 17-3932

Drum	2,00 %	SELLASOL® TN-FF liq
	0,25 %	SELLA® Fast Navy A
	0,08 %	SELLA® Fast Red F
Finishing	92,80	RODA® Lite White 07
	4,10	RODA® Lite Blue 07
	0,50	RODA® Lite Yellow 07
	2,60	RODA® Lite Fuchsia 07

↑ PURPLE HEATER TPG 14-3911

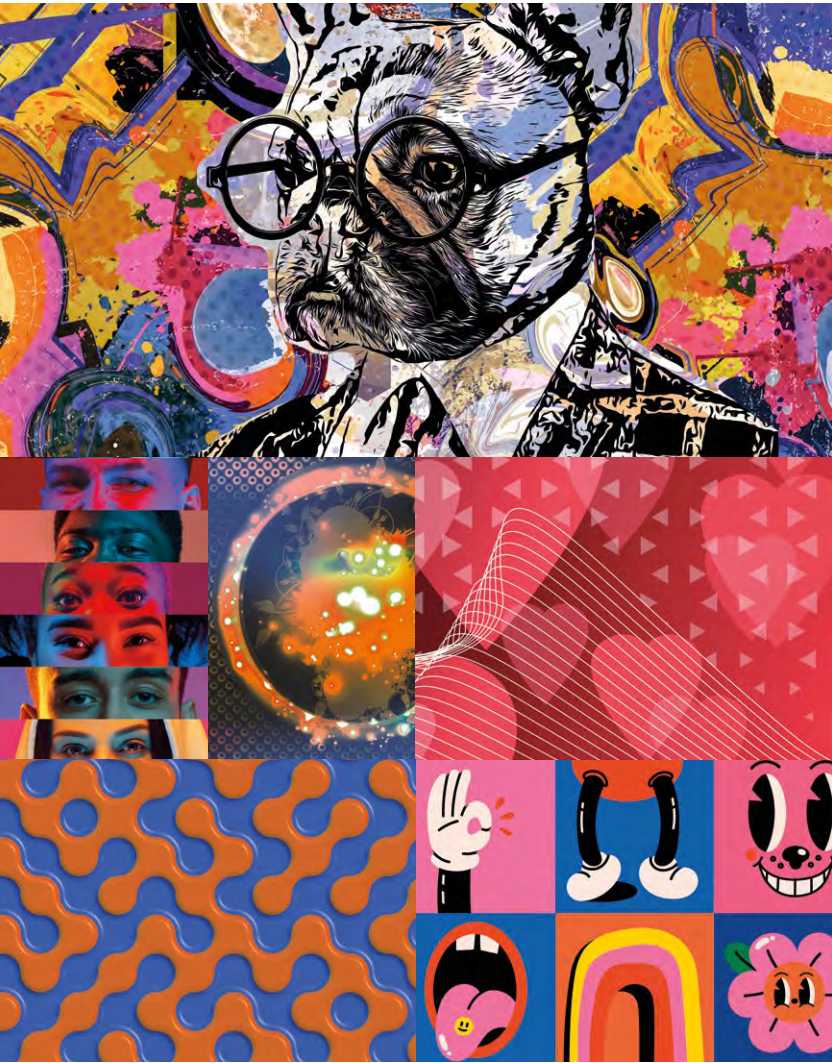
Drum	4,00 %	SELLASOL® TN-FF liq
	0,50 %	SELLA® Fast Blue A
	0,03 %	SELLA® Fast Bordeaux A
Finishing	95,50	RODA® Lite White 07
	3,00	RODA® Lite Blue 07
	1,00	RODA® Lite Lemon 07
	0,40	RODA® Lite Red 07

↑ BALLAD BLUE TPG 13-4304

Drum	4,00 %	SELLASOL® TN-FF liq
	1,00 %	SELLA® Fast Beige A
Finishing	98,40	RODA® Lite White 07
	0,05	RODA® Lite Black 07
	0,90	RODA® Lite Ochre 07
	0,60	RODA® Lite Lemon 07

↑ WINTER WHITE TPG 11-0507

All RODA® Lite 07 formulations are applied on no-dyed crust and quantities are expressed in grams per liter.



TARGET:

- Retro trainers shoes.
- Triangular reptile leather bag.
- Bucket hat with suede berries and cherries.



Formula Gulp

↑ **PINK LEMONADE** TPG 16-1735

↑ **GOLDEN POPPY** TPG 16-1462

↑ **AMPARO BLUE** TPG 18-3945

↑ **HIBISCUS** TPG 18-1762



Formula Gulp

Drum	2,70 %	SELLA® Fast Red RTN
	0,90 %	SELLA® Fast Red A
Finishing	50,00	RODA® Lite White 07
	30,00	RODA® Lite Red 07
	15,00	RODA® Lite Fuchsia 07
	5,00	RODA® Lite Lemon 07

↑ PINK LEMONADE TPG 16-1735

Drum	3,00 %	SELLA® Fast Orange A
	0,40 %	SELLA® Fast Red A
Finishing	5,00	RODA® Lite White 07
	70,00	RODA® Lite Orange 07
	10,00	RODA® Lite Yellow 07
	15,00	RODA® Lite Lemon 07

↑ GOLDEN POPPY TPG 16-1462

Drum	4,00 %	SELLA® Fast Blue A
	1,00 %	SELLA® Fast Violet RL
Finishing	10,00	RODA® Lite White 07
	70,00	RODA® Lite Blue 07
	5,00	RODA® Lite Violet Brown 07
	15,00	RODA® Lite Red Violet 07

↑ AMPARO BLUE TPG 18-3945

Drum	3,50 %	SELLA® Fast Red A
	0,10 %	SELLA® Fast Bordeaux A
Finishing	20,00	RODA® Lite White 07
	60,00	RODA® Lite Red 07
	15,00	RODA® Lite Fuchsia 07
	5,00	RODA® Lite Lemon 07

↑ HIBISCUS TPG 18-1762

All RODA® Lite 07 formulations are applied on no-dyed crust and quantities are expressed in grams per liter.

Folk Auto Speed



TARGET:

- Perforated leather boots.
- Embroidered leather skirt with patent stripes and metallic suede fringes.
- Leather stuffed bag with sculptural perlized leather handle.



Folk Auto Speed

↑ **TENDER PEACH** TPG 12-0912

↑ **CAMEO ROSÉ** TPG 14-1310

↑ **LIGHT LILAC** TPG 12-2903

↑ **CYCLAMEN** TPG 16-3118



Folk Auto Speed

Drum	4,00 %	SELLASOL® TN-FF liq
	1,60 %	SELLA® Fast Beige A
	0,60 %	SELLA® Fast Orange A
Finishing	95,80	RODA® Lite White 07
	3,20	RODA® Lite Orange Brown 07
	0,70	RODA® Lite Yellow 07
	0,30	RODA® Lite Fuchsia 07

↑ TENDER PEACH TPG 12-0912

Drum	4,00 %	SELLASOL® TN-FF liq
	1,40 %	SELLA® Fast Orange A
	1,00 %	SELLA® Fast Beige A
Finishing	90,70	RODA® Lite White 07
	2,00	RODA® Lite Blue 07
	3,40	RODA® Lite Orange Brown 07
	3,90	RODA® Lite Orange 07

↑ CAMEO ROSÉ TPG 14-1310

Drum	3,00 %	SELLASOL® TN-FF liq
	0,20 %	SELLASET® Red H
Finishing	97,30	RODA® Lite White 07
	0,80	RODA® Lite Blue 07
	1,10	RODA® Lite Orange 07
	0,70	RODA® Lite Fuchsia 07

↑ LIGHT LILAC TPG 12-2903

Drum	2,00 %	SELLA® Fast Red 2B
Finishing	85,80	RODA® Lite White 07
	0,30	RODA® Lite Violet Brown 07
	0,90	RODA® Lite Red Violet 07
	12,90	RODA® Lite Fuchsia 07

↑ CYCLAMEN TPG 16-3118

All RODA® Lite 07 formulations are applied on no-dyed crust and quantities are expressed in grams per liter.

As the conventional room layout in our homes and communal areas gradually moves further away from their original definitions and functions, hybrid spaces are generated that provide a transitional breeding ground for exploring and innovating new projects. Wherever we look, we find co-working spaces, homes incorporating workstations and offices, apartments framed by trees and plants symbiotically conversing with architectural elements, and ever-more hybridised, multitasking furniture.

As our houses and homes continue to fragment, the part of the leather industry that produces leather for interiors must change the pace of its conventional, collections as they no longer inspire us to explore new horizons, and focus on:

- the frisson of colour
- the lightness of leather

Now let's take a closer look at the two macro trends and the targets each feature.

The tanning industry can produce the desired frisson of colour with two types of tanning products. Traditional chrome for cleaner, more faded colours through to clean shades of beige, ecru, ivory and grey, and synthetic-based tanning products that are naturally white and transparent enough to produce the "Instagram" colours, such as deep tones of electric blue and fuchsia that are bright and reflective enough to stimulate the imagination of the audience on the screens of their various devices.

Playing leading roles in this world are:

- Nappa with a 1.2 / 1.4 thickness weighing 68 / 72g per square foot using bovine leathers that are spun at the end of the process to loosen the leather's structure even after it has been finished.
- "Sponge" effect nubuck for zebu and all buffalo hides created by splitting the grain in wet-blue so the leather is dyed deep down to the roots even for thicker leathers of 1.6 / 1.8 weighing 78 / 80g per square foot. This works for everything from the highest quality to cheaper leathers, creating an attractive look with a nod to the world of videogames, such as Fortnite or Minecraft. Preferred targets are interlocking modular systems, particularly geometric shapes and even peanut shapes to create a more dynamic, extended puzzle.

Lightness, namely the specific weight of the leather, is the second key subject, especially at a time when logistics has seen a steep hike in costs. Consequently, any products or goods that are light are more easily transportable and increase in value, demanding R&D departments to source new chemical products and innovative applications.

THEMES:

- Handcraft Job
- Opera Prima

Handcraft Job



TARGET:

- Vegetal coffee table together with flower embossed suede cushions.
- Carver chairs and sofas seat pads.
- Calf leather laptop and bags.



Handcraft Job

↑ **MARIGOLD** TPG 14-1050

↑ **CANYON SUNSET** TPG 15-1333

↑ **GINGER** TPG 17-1444

↑ **BIKING RED** TPG 19-1650



Handcraft Job

Drum	3,00 %	SELLA® Fast Yellow R
	0,80 %	SELLA® Fast Orange A

Finishing	53,50	RODA® Lite White 07
	7,60	RODA® Lite Ochre 07
	36,00	RODA® Lite Yellow 07
	2,80	RODA® Lite Orange 07

↑ MARIGOLD TPG 14-1050

Drum	1,50 %	SELLA® Fast Orange A
	1,50 %	SELLA® Fast Havana A
	0,05 %	SELLA® Fast Red A

Finishing	72,70	RODA® Lite White 07
	19,10	RODA® Lite Orange Brown 07
	4,40	RODA® Lite Yellow 07
	3,80	RODA® Lite Red 07

↑ CANYON SUNSET TPG 15-1333

Drum	2,50 %	SELLA® Fast Brown HC
	0,80 %	SELLA® Fast Red A

Finishing	34,10	RODA® Lite White 07
	48,70	RODA® Lite Orange Brown 07
	12,50	RODA® Lite Red 07
	4,60	RODA® Lite Orange 07

↑ GINGER TPG 17-1444

Drum	3,00 %	SELLA® Fast Bordeaux RVN
	1,00 %	SELLA® Fast Brown DB

Finishing	19,90	RODA® Lite Ochre 07
	14,50	RODA® Lite Red Violet 07
	10,60	RODA® Lite Red Brown 07
	54,90	RODA® Lite Fuchsia 07

↑ BIKING RED TPG 19-1650

All RODA® Lite 07 formulations are applied on no-dyed crust and quantities are expressed in grams per liter.

Opera Prima



TARGET:

- Leather and wood armchair with nubuk pillow.
- Modernist two seater sofa.
- Dining nappa chair.

↑ **WHISPER GREEN** TPG 12-5404

↑ **SUNDRESS** TPG 12-0729

↑ **SUPER LEMON** TPG 14-0754

↑ **MINERAL YELLOW** TPG 15-1046



Opera Prima

Drum	2,00 %	SELLASOL® TN-FF liq
	0,50 %	SELLA® Fast Beige A

Finishing	98,50	RODA® Lite White 07
	0,50	RODA® Lite Blue 07
	1,00	RODA® Lite Ochre 07
	0,05	RODA® Lite Red 07

↑ WHISPER GREEN TPG 12-5404

Drum	1,80 %	SELLA® Fast Yellow A
	1,00 %	SELLA® Fast Beige A

Finishing	70,50	RODA® Lite White 07
	2,30	RODA® Lite Yellow 07
	25,70	RODA® Lite Lemon 07
	1,50	RODA® Lite Violet Brown 07

↑ SUNDRESS TPG 12-0729

Drum	1,00 %	SELLA® Fast Yellow A
	2,00 %	SELLA® Fast Yellow R

Finishing	28,20	RODA® Lite White 07
	0,10	RODA® Lite Black 07
	15,30	RODA® Lite Yellow 07
	56,5	RODA® Lite Lemon 07

↑ SUPER LEMON TPG 14-0754

Drum	4,00 %	SELLA® Fast Orange 2GC
	0,50 %	SELLA® Fast Yellow R

Finishing	39,90	RODA® Lite White 07
	2,00	RODA® Lite Blue 07
	55,20	RODA® Lite Yellow 07
	2,90	RODA® Lite Orange 07

↑ MINERAL YELLOW TPG 15-1046

All RODA® Lite 07 formulations are applied on no-dyed crust and quantities are expressed in grams per liter.