



Inspiring – TFL Colour Trends

» Autumn-Winter 2021–22

TFL – Great chemicals. Excellent advice.

TFL's seasonal fashion inspirations



Colour Trend Catalogue for the leather industry

TFL presents the fashion colour trends for leather garment, footwear, accessories and upholstery.

Welcome to TFL's new Colour Trend Catalogue for the season Autumn-Winter 2021–22. In this brochure we present the colour trends for leather garment, footwear, accessories and upholstery.

We have divided the colour trends into "Wearing" and "Living", devoting a section to each within the publication. Wearing comprises inspirations and colour trends for garments, footwear and accessories. The Living section features all colours that will decorate the season's interior design.

Advantages for TFL customers: knowledge of the future colour preferences and trends helps designers, manufacturers and tanners to stay one step ahead of the market. In combination with the fashion colour trends, TFL provides information about the appropriate dyes and dye applications.

In the following pages we will highlight our SELLA® colour range. SELLA® dyes are anionic powder dyes specially selected for the drum dyeing of all article types.

The products provide many advantages such as:

- brilliant and intense shades
- good general fastness properties
- excellent cost/performance ratio

In addition, we present the TFL RODA® Lite 07 casein-free range of finely dispersed, anionic water-based pigments with overall good fastness properties and excellent covering power. RODA® Lite 07 pigments can be used for shoe and leather goods, as well as upholstery and garment leathers.

TFL hopes you will find this catalogue of real value in your day-to-day decision making on colour.
www.tfl.com



Wearing

We rely on multiple concepts such as engaging, decorating, connecting, discovering, forging, adorning and celebrating to create new products and materials in which the skin is still the main protagonist.

Captivated with conceits and retanning that moisturise the skin, restoring the elasticity of the original material, the sweet toughness of the top-grain and the silky ultra sensory softness both to the touch and in European calfskin and in goatskin with a fine top-grain.

THEMES:

- Lapland Survivors
- Wang Cadillac
- National Bureau
- Wool Protein
- Chess match

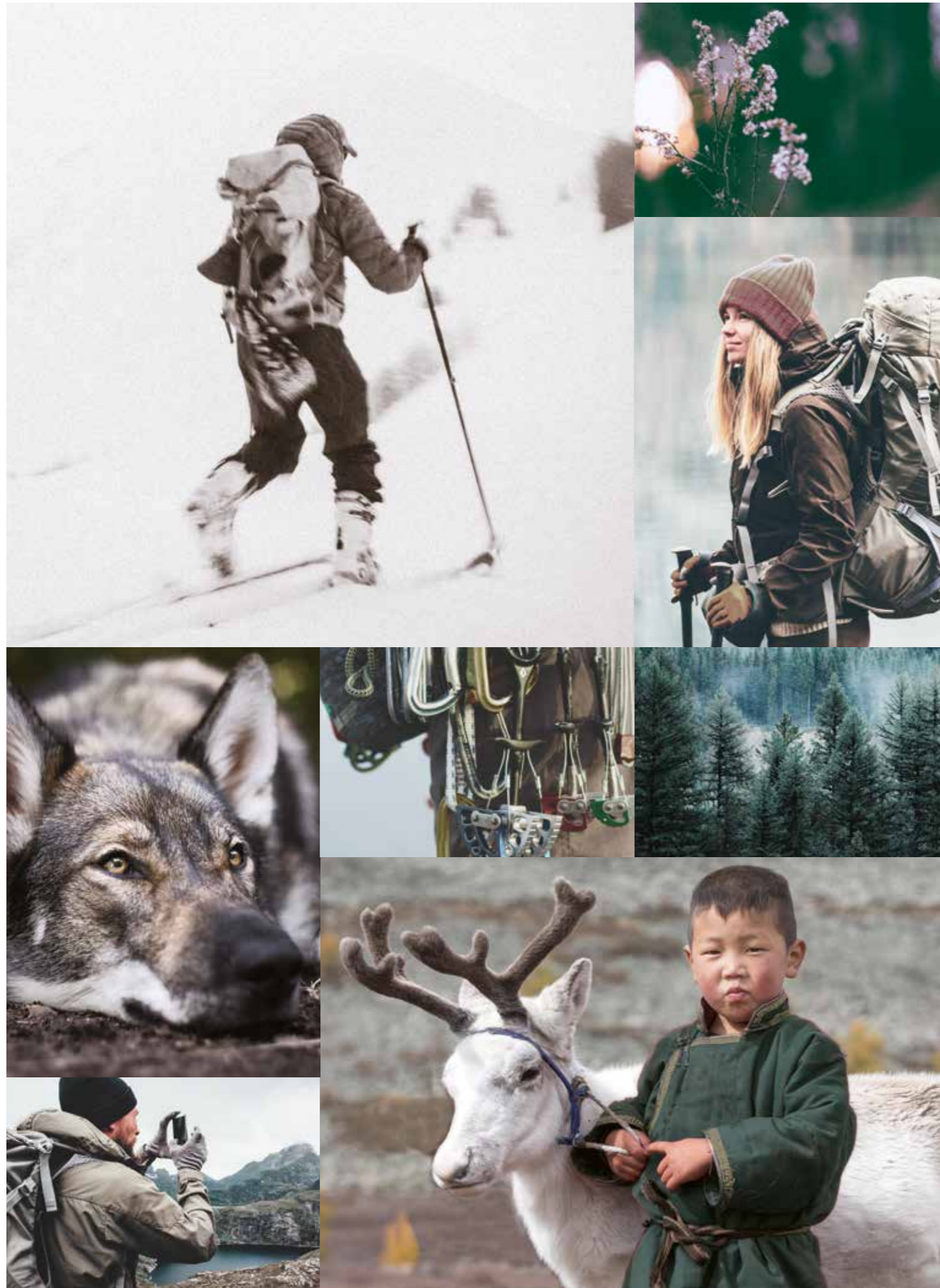
Decorated with pre-Raphaelite shades of coppery red, brown carcadé, lagoon green and dull orange, all shades of extreme character and depth. The women of the pre-Raphaelites emerge from the Victorian stereotype of tiny, childish blonde beauty to enter into stories as real figures adorned with precious stones or printed fabrics and leathers like reptiles, eels and snakes, engraved on vegetalisated skins that shine even in the serene light of sunrise.

The world of leather will increasingly be shaped by today's digital world that requires hybrid finishing and printing solutions combining the technology of three-dimensional prints with satin-finished solutions featuring optical laser effects of glassy polyurethanes and shiny caseins.

Shoulder straps made of water-repellent and printed coats with round geometric grains, travelers' backpacks repleted with stitched or detachable pockets contrasting both in colour and texture, thus identifying the most sensitive objects are the indispensable tools for modern adventure-seekers diving deeply into nature's challenges. Belts and multitasking bracelets in bi-colour vegetable tanning featuring a fluorescent / bright side as well as a second side with an opaque and resistant finish.

Shaping your own body with extra stretch calfskin and lamb tassels to guarantee the body and fit, total freedom of movement with a gluing system which avoids seams and does not make a single wrinkle. This high-tech elegance also draws from the world of sport which requires technical standards such as lightness, breathability, water repellency and quick drying.

At the end, we associate ourselves with adorning and celebrating, because they are terms that represent the so-called charm of the uniform. It is no coincidence that countless items of accessories born in the military universe, from the trench coat to the cardigan, from the desert-boots to the duffle coat, we then entered the history of clothing permeating every scenario of modernity, from art to music, from fashion to cinema. An influence that prefers structural leather, anti-aging both in full-grain solutions and in water-repellent nubuck versions, in cobalt blue, graphite grey and chocolate brown, which frame a comfortable and elegant unisex figure with hints of couture.



Lapland Survivors

Green eco-warriors: saving the planet supported by functional, lightweight leather.

Trends: With the love of adventure and enjoying the nature, the mission needs backpacks and multitasking jackets made from waterproofed calfskin and reversible accessories from vegetable leathers with fluorescent details.

European bull retanned with MAGNOPAL® IPF and SELLATAN® TMC; fatliquored with CORIPOL® SLG and CORIPOL® AT. MAGNOPAL® TGR is used at the end of the process to improve bath exhaustion. On snuffed grain, the embossed natural animal grain is highlighted with RODA® Wax SCH/N and RODA® Cryl 108/N.

European bovine, pretanned with SELLATAN® WLG Liq & TANNESCO® CPR Liq; and then retanned with MAGNOPAL® RHN is creating a full and mellow article. The use of MAGNOPAL® SFT-F also enhances print retention of the aluminium plate, used after an intermediate drying. Upgrading is achieved by using RODA® Base Reco 3 applied by roller-coater and then fixed with RODA® Pur 5427/N.

Chrome tanned Brazilian zebu waterproofed with DRYWALK® FAT and MAGNOPAL® SOF, before capping with TANNESCO® CPR Liq. After embossing, the crust is finished with RODA® Cryl 114 and fixed with RODA® Fix 5040 Dull.

TARGET:

- Multitasking backpack with removable accessories
- Laced moonboots with double-face lining
- Sustainable unisex moccasins with embossed leather sole



PEAT
TPG 19-4818

ASPHALT
TPG 19-0201

ORION BLUE
TPG 19-4229

SMOKED PEARL
TPG 18-0000

Wang Cadillac

Passion turns to print design.

Trends: Wrapping films cover brilliantly coloured cars and fashion accessories; everything is smart and pearlised-metallic. This turbo feeling regarding women and men's garments, as well as the Instagram colour fullness, is illustrated on both full grain leather pieces and suede split, with a glamorous nappalan effect.

European full-grain calfskin, with a full round handle is permeated with MAGNOPAL® RHN and CORIPOL® SB, in order to obtain a rubbery and very shiny leather using RODA® Fix 5090, with a contrasting metallic-reflection provided by the RODA® Poliperl pigments.

SELLA® Fast dyes are used to create a bright and intense Madras goat crust. The embossed diamond pattern is enhanced by polishing with RODA® Wax 1423 and RODA® Wax 4097 to create a greasy, but pleasant touch.

Full-grain calfskin is finished on the flesh side with RODA® Micro Tec technology resulting in a shiny Nappalan effect. Pinpoint embossing is made on the grain side and then finished by a synchro-roller with RODA® Bind TLC 385 and RODA® Fix 5188/N Gloss.

TARGET:

- Reversible, stylish biker-boot with zip and elastic straps
- Semi-rigid padded bag with contrasting metal accessories
- Bootie made with printed calfskin and buckles



SEQUOIA
TPG 19-1333



GOLDEN YELLOW
TPG 15-0953



GALAPAGOS
TPG 18-5725



WINE TASTING
TPG 19-2118





National Bureau

The timeless charm of a uniform; where fashion communicates prestige.

Trends: Soldiers, aviators and sailors' ships are the inspiration. The protection for next winter season: full, calfskin leathers made with high tech chemical solutions are our strongest weapon. Soft, water-repellent, full-grain calfskin made with DRYWALK® IN and MAGNOPAL® PS-N. The grain is finished with RODA® Oil DW 4050 for a slight pull-up, and on the flesh side, the RODA® Micro Tec technology is applied.

MAGNOPAL® FIS is used to impregnate reversible calf in the drum; sandwich dyeing with INVADERM® SN, which enhances the brightness and intensity of the colour. The finishing is provided by RODA® Fix 6271-B applied onto a geometric embossed pattern.

Side leather gets a firm and tight retanning using SELLATAN® PT Conc and SELLATAN® HO Liq. The fatliquoring is made with CORIPOL® SV and CORIPOL® DX-1202. The grain is polished after applying RODA® Ground Reco 5 and the flesh side is sealed with RODA® Micro Lucent and the touch enhanced with RODA® Feel N4.

TARGET:

- Woman's ankle riding boot with stitching and polishing on the tips
- Boot with eco-friendly leather sole and sock in stretch nappa leather
- Woman's travel bag with straps



SHALE
TPG 19-3903



SLATE BLACK
TPG 19-0814



CHOCOLATE
TPG 19-1317



DARK EARTH
TPG 19-1020

Wool Protein

Unveiling the style through wool.

Trends: Wool and cashmere, alpaca and suede, will go back into the collection and will be mixed together. We will concentrate on the leather surface with warm and sustainable finishing. The split gets retanned using SELLASOL® HFN-F Gran to achieve a short two-way nap after buffing, and is impregnated at the end of the process with MAGNOPAL® FIS. The crust is upgraded with RODA® Care 5754 and sealed with RODA® Micro Tec technology.

Chrome tanned goatskin softened in retanning by using SELLATAN® WL-G Liq and CORIPOL® GU. Reversible effect achieved by applying RODA® Micro Tec technology on the flesh side, with the added touch of RODA® Feel S 2075.

Full substance wet-white tanned calfskin. Grain and split are retanned with SELLATAN® HIT Liq and treated with SELLASOL® FTF, CORIPOL® AT and CORIPOL® LE. Transparency and a soft nappa feel are achieved with RODA® Oil AA 4040 before polishing, and the good levelness is thanks to the use of RODA® Base AF/B in combination with RODA® Tec AW.

TARGET:

- Unlined woman's trench boots
- Unisex stringed boots with leather cut lines
- Unlined sports bag with suede buckles



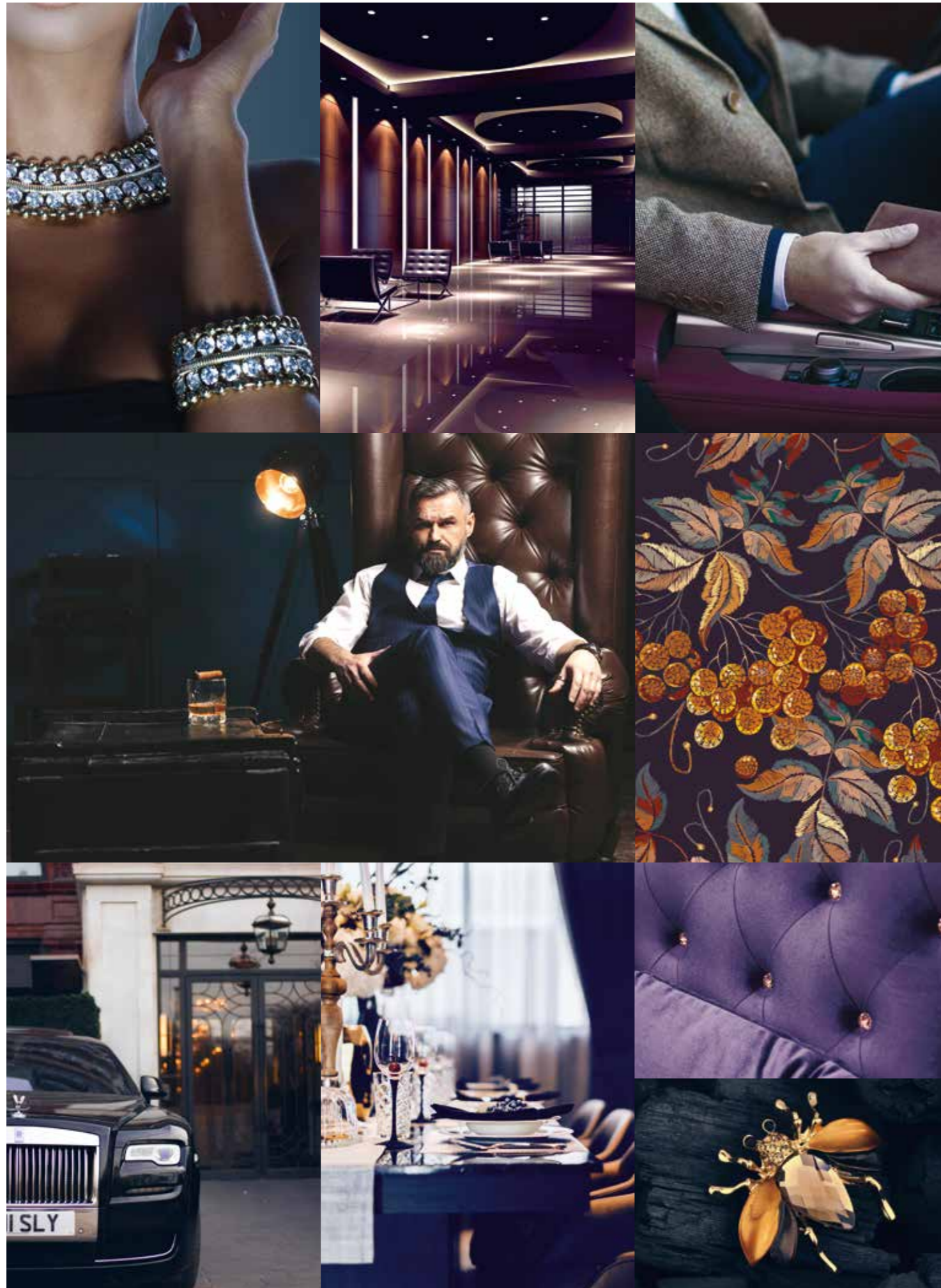
BURNT HENNA
TPG 19-1540

CINNAMON
TPG 18-1345

SUN FLOWER
TPG 16-1054

SCARLET FLAME
TPG 18-1662





Chess Match

A touch of glamour & elegance, with the return of a classic.

Trends: A mix between Grace Kelly and James Bond, with extra-chic details, where black is everywhere together with emerald green and deep blue shades. Silk and grain surfaces will rise and fall into the most exclusive boutiques.

TANNESCO® CPR Liq and SELLATAN® TMC turn Spanish entrefino-lambskins into a full and tight crust. The Two-tone effect is achieved by dyeing the leather twice – in wet-blue and in crust. RODA® Ground UP– XS provides the softness and the levelness, whilst RODA® Pur 5427/N enhances the shiny look to a final printing with a silk-satin effect.

Richly nourished calf crust is achieved by using the sustainable fatliquors CORIPOL® AT and CORIPOL® SG. The tone-in-tone pull-up effect is provided by RODA® WAX PUR, in combination with SELLA® Derm M2 liquid dyes.

Goat wet-blue is filled with SELLASOL® FSU Gran and fatliquored with CORIPOL® UFB/W. The traditional glossy glazed look is obtained by using RODA® Fix 1051 and RODA® Bind 1505.

TARGET:

- Women's boots with uppers in suede and legging in shiny lambskin
- Everyday bag with pleated sides and straps
- Unlined women's bucket-bag with decorated belt and double-face tassels



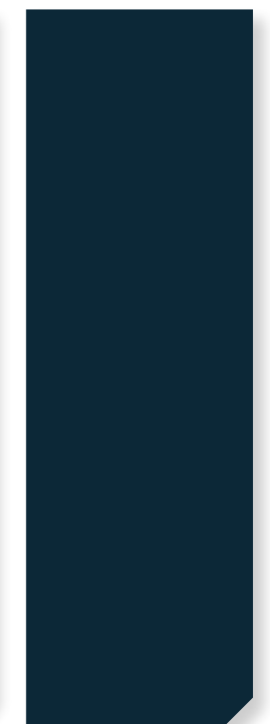
EVENING BLUE
TPG 19-3815



DARK CHEDDAR
TPG 15-1150



INDIGO
TPG 19-3215



REFLECTING POND
TPG 19-4326



Living

TFL, always ahead of time, answers the world's latest demands with new collections, new collaborations, new materials, new fields of research in the speciality chemical sector. The finishing of leathers goes from litres to meters, raw materials come from renewable sources and innovative solutions that save water in the dyeing and finishing phases – e.g. osmotic injection technique – are being launched.

The fittings designed with these innovative soft and shiny leathers delude us into living in nature, from coverings in soft panels in vegetalised lambskin resembling a tobacco leaf, to water-repellent nubuck calfskin diamonds, to the finishing touches of vegetable tanned fittings – complements that radiate the light reflected in the rooms with a pleasant scent of bergamot and aloe.

Approaching, sitting down, resting your back on a log and relaxing, opens up to Silvo-therapy which is based on the ancient idea of recovering and well-being through trees. Strengthening the chromatic ties of the powder tones with full colours on chrome-free leathers.

THEMES:

- Digital Interiors
- Clean Landscape

The contrast of greased floaters with full-grain leathers with a tactile touch, due to resins and waxes to be combined with brilliant effects of enamel-polished polyurethanes and pearly powdered dusting with silica resins, which will help in the construction of environments closer and closer to the needs of man in terms of correctness and comfort.

Future cars will be a cocoon like your own home, a living room where you can rediscover the pleasure of pastel colours in the soft full grain leathers integrated by tailored seams, nubuck anti-soiling surfaces and printed leathers with pleasant three-dimensional effects to clean and reflective tones that conceal touch solutions.



Digital Interiors

The evolution of digitalization transfigures form and content.

Trends: The materials, components and leathers for our houses and cars are the same. Into those spaces we desire softness, three-dimensional embossed nappa pieces in light shades & tones. Wet-blue Brazilian zebu floater opened-up with SELLASOL® SF; followed by a retanning with SELLATAN® RL Liq and fatliquored using CORIPOL® LEO. Finished with the RODA® Micro Tec technology, roller-cylinder embossed and then top-coated with RODA® Fix 5792/N, to trigger shiny tips after dry milling.

Wet-white bull hides pretanned with SELLATAN® LI-G Liq; retanned with SELLATAN® HIT Liq and fatliquored with CORIPOL® AV and CORIPOL® LEO. 'Volume' is provided by the use of RODA® Pur WX in the base coat, due to its thermal expanding properties.

American wet-blue heavy native steers are opened-up with OROPON® WB, followed by retanning before fatliquoring with MAGNOPAL® IPF and MAGNOPAL® SOF for very lightweight characteristics. RODA® Base 5698 enriches the base coat, which is further enhanced through a cloudy effect obtained by using RODA® Fix 5040 Dull and RODA® Cor HTP pigments applied by design-roller.

TARGET:

- Car headrest and armrest
- Inserts for car seats
- Punctured sofas



IRIS ORCHID
TPG 17-3323

OLD GOLD
TPG 15-0955

CAMELIA ROSE
TPG 17-1930

TANGERINE TANGO
TPG 17-1463



Clean Landscape

Wellbeing comes home.

Trends: In nature, we continuously discover inputs to re-create a sustainable future world. Wet-white is almost everywhere, water based finishing solutions are our elements to precisely cover chrome-free leathers. Firmness and rubberiness are the most important features requested for the tanning and retanning processes.

Lime-split cow hides are pretanned with SELLATAN® WL-G Liq and SELLATAN® RL Liq, before retanning with SELLATAN® HIT Liq and fatliquored using CORIPOL® AV and CORIPOL® LE. Finishing is made using RODA® Base AF-B combined with RODA® Cor HTP pigments and fixing with RODA® Fix 6271-B. Lime-split bull hides are pretanned with SELLATAN® LI-G Liq and TANNESCO® CPR Liq. Crusting is based on SELLATAN® HIT Liq, softened with CORIPOL® AV and CORIPOL® AT. Finishing involves RODA® Base 5073 as base coat and RODA® Fix 5010 Gloss for shiny tips.

Further lime-split bull hides are pretanned with SELLATAN® LI-G Liq and TANNESCO® CPR Liq, before crusting with SELLATAN® HIT Liq and waterproofed with DRYWALK® FAT, capped with TANNESCO® CPR Liq before drying & overnight milling. Finishing is done with RODA® Base 5103 and topped by RODA® Fix 5040 Dull, mixed with RODA® Feel S 5796 and RODA® Feel SR 5086, to obtain an anti-soiling effect.

TARGET:

- Inter-twined frames for sofas and small armchairs
- Heat-molded seats
- Lounger for indoors



CASHEW
TPG 17-1137



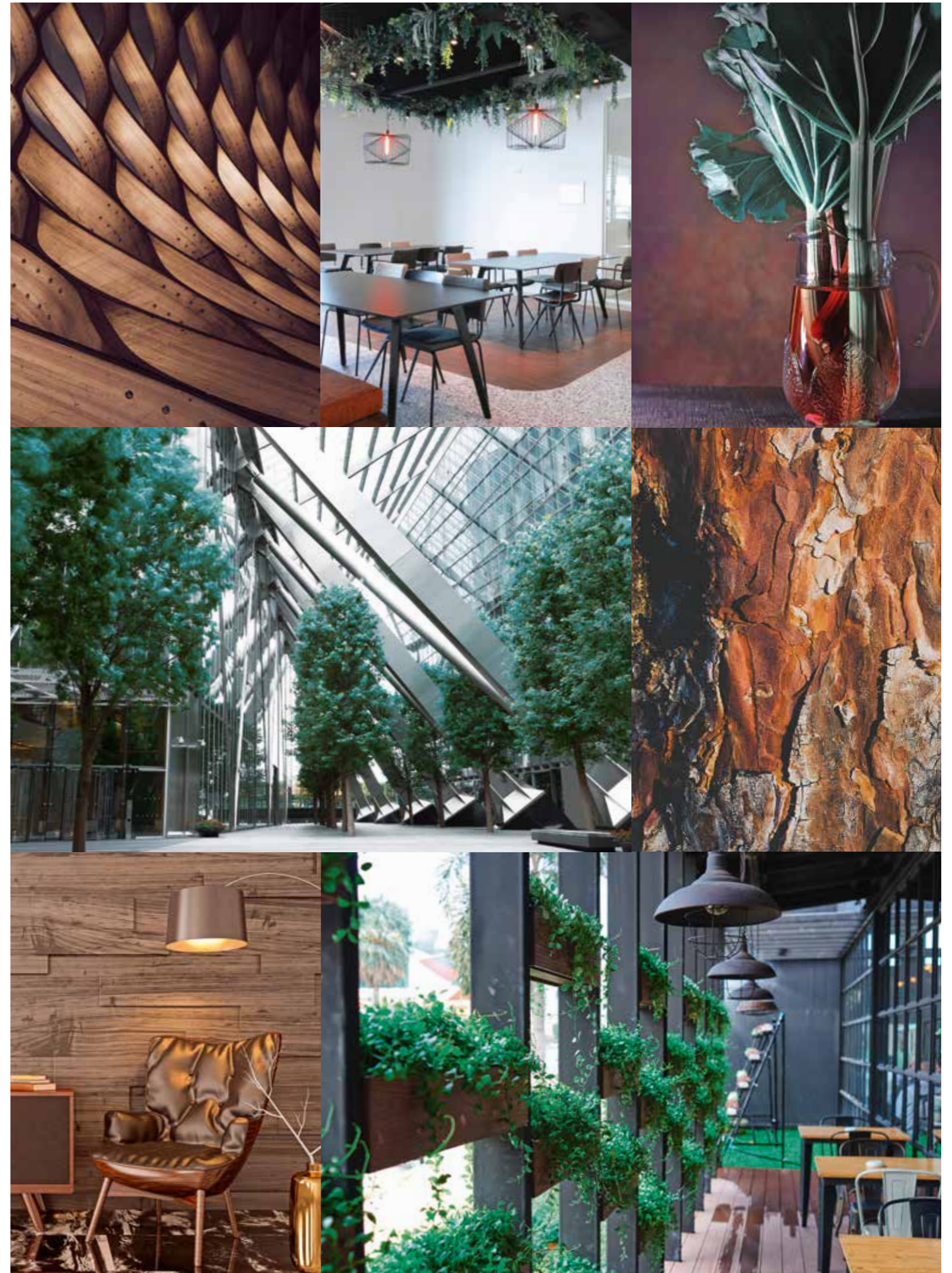
PUMPKIN
TPG 17-1449



DEEP LAKE
TPG 18-4834



SLEET
TPG 16-3916





Glossary Wet-end

SELLATAN® HIT Liq

Concentrated liquid retanning agent featuring:

- High tanning capacity
- Excellent heat & light fastness properties
- A significant reduction in the amount of TDS (Total Dissolved Solids) going into the waste water.

MAGNOPAL® IPF – Innovative technology for lightweight leathers

Filling empty and loose structured hides and skins is more important than ever; especially with declining hide quality. Traditional tanning agents and fillers are by far too small to fill the large empty spaces in the hide structure, especially those in the looser areas of the flanks and bellies.

MAGNOPAL® IPF targets these voids, imparting a pronounced selective filling and as a consequence, an interesting substance-levelling effect, from backbone to belly.

In parallel, and just as importantly, the extremely low-density character of MAGNOPAL® IPF allows the tanner to build into his recipes a reduction in specific and area weight, lightweight with selective filling!

TANNESCO® CPR Liq – Versatile mineral tanning agent

Is a masked zirconium complex offering technical solutions as a capping agent, and in pre-tanning and retanning. It reacts mildly when compared with chromium & aluminium sulfate, and the extremely acidic zirconium sulfate. TANNESCO® CPR Liq offers a toxicological and environmentally friendly alternative, when tight grain articles with excellent dyeability are required.

CORIPOL® AV – Fatliquoring agent for soft nappa, furniture and automotive leathers

Is an anionic fatliquoring agent, based on a combination of modified sustainable natural & synthetic softening agents. It has good stability to electrolytes, hard water and in chrome and aluminium tanning floats. CORIPOL® AV imparts good inner softness and a pleasant handle; it is the ideal main fatliquor for all soft articles like upholstery, garment and automotive leathers. It can also be used as a companion fatliquor for shoe upper and handbag leathers when combined with e.g. CORIPOL® ESA-N.

SELLATAN® LI-G Liq – Pre-tanning agent with low impact on health and the environment

The majority of chromium-free leathers today are pre-tanned with modified glutaraldehyde (GA) and, although GA is considered a hazardous chemical, in most cases it can be handled in a safe way in order to minimise risks to workers, consumers and the environment. To reduce the risk even further the highly masked pre-tanning agent SELLATAN® LI-G Liq has been added to the range, offering the following features & benefits:

- Reduced GA odour during the pre-tanning process, which improves workplace health and safety
- Excellent penetration and distribution throughout the cross-section – even on full substance pelts
- High efficiency: >95% of the applied GA is exhausted from the bath



Glossary Finishing

RODA® Base RECO 3

Is a ready to use product which is extremely soft with excellent covering power, particularly designed as the main component for pre-bottoming of snuffed grain leather where good covering and reconstruction need to be achieved - even applied in a small quantity.

RODA® Ground RECO 5

Is a polishable pre-bottom compound, suitable for full or slightly buffed grain leather to achieve very deep classic black articles with natural look.

RODA® Wax PUR

Is an NEP-free blend of resins and waxes specifically designed to obtain a wide range of pull up effects on full grain and buffed garment and shoe upper leather.

RODA® Base 5103

Is a ready to use compound with medium - low dullness, which is recommended for slightly buffed upholstery leathers. Thanks to its good fastness properties it can also be used for white and pastel shades.

RODA® Fix 5040 Dull

Is a dull NMP-free & NEP-free aqueous top coat with excellent general physical and chemical properties. It gives the leather a dry silky feel, performing good flow out and a high matting efficiency.

RODA® Care 5754

Is a ready to use compound specifically formulated to cover small and medium defects on full and buffed grain leather without any overloading, with good adhesion.



www.tfl.com



Inspiring – TFL Colour Trends

» Autumn-Winter 2021–22



TFL – Great chemicals. Excellent advice.





We rely on multiple concepts such as engaging, decorating, connecting, discovering, forging, adorning and celebrating to create new products and materials in which the skin is still the main protagonist.

Captivated with conceits and retanning that moisturise the skin, restoring the elasticity of the original material, the sweet toughness of the top-grain and the silky ultra sensory softness both to the touch and in European calfskin and in goatskin with a fine top-grain.

Decorated with pre-Raphaelite shades of coppery red, brown carcadé, lagoon green and dull orange, all shades of extreme character and depth. The women of the pre-Raphaelites emerge from the Victorian stereotype of tiny, childish blonde beauty to enter into stories as real figures adorned with precious stones or printed fabrics and leathers like reptiles, eels and snakes, engraved on vegetalisated skins that shine even in the serene light of sunrise.

The world of leather will increasingly be shaped by today's digital world that requires hybrid finishing and printing solutions combining the technology of three-dimensional prints with satin-finished solutions featuring optical laser effects of glassy polyurethanes and shiny caseins.

Shoulder straps made of water-repellent and printed coats with round geometric grains, travelers' backpacks repleted with stitched or detachable pockets contrasting both in colour and texture, thus identifying the most sensitive objects are the indispensable tools for modern adventure-seekers diving deeply into nature's challenges. Belts and multitasking bracelets in bi-colour vegetable tanning featuring a fluorescent / bright side as well as a second side with an opaque and resistant finish.

Shaping your own body with extra stretch calfskin and lamb tassels to guarantee the body and fit, total freedom of movement with a gluing system which avoids seams and does not make a single wrinkle. This high-tech elegance also draws from the world of sport which requires technical standards such as lightness, breathability, water repellency and quick drying.

At the end, we associate ourselves with adorning and celebrating, because they are terms that represent the so-called charm of the uniform. It is no coincidence that countless items of accessories born in the military universe, from the trench coat to the cardigan, from the desert-boots to the duffle coat, we then entered the history of clothing permeating every scenario of modernity, from art to music, from fashion to cinema. An influence that prefers structural leather, anti-aging both in full-grain solutions and in water-repellent nubuck versions, in cobalt blue, graphite grey and chocolate brown, which frame a comfortable and elegant unisex figure with hints of couture.

THEMES:

- Lapland Survivors
- Wang Cadillac
- National Bureau
- Wool Protein
- Chess Match







TARGET:

- Multitasking backpack with removable accessories
- Laced moonboots with double-face lining
- Sustainable unisex moccasins with embossed leather sole





↑ **PEAT** TPG 19-4818

↑ **ASPHALT** TPG 19-0201

↑ **ORION BLUE** TPG 19-4229

↑ **SMOKED PEARL** TPG 18-0000



 Lapland Survivors

Drum 0,50 % INVADERM® LU
2,50 % SELLA® Fast Green GDN
1,00 % SELLA® FAST Blue BBN

Finishing 57,00 RODA® Lite White 07
13,10 RODA® Lite Blue P/N
14,70 RODA® Lite Lemon 07
15,10 RODA® Lite Red Brown 07

↑ **PEAT TPG 19-4818**

Drum 0,50 % INVADERM® LU
2,00 % SELLA® Fast Blue 4GL
2,00 % SELLA® Star Black HBR conc

Finishing 33,35 RODA® Lite White 07
16,35 RODA® Lite Blue P/N
26,50 RODA® Lite Red Violet 07
23,60 RODA® Lite Red Brown 07

↑ **ASPHALT TPG 19-0201**

Drum 0,50 % INVADERM® LU
3,00 % SELLA® Fast Blue 4GL
1,00 % SELLA® Fast Black HBR conc

Finishing 47,30 RODA® Lite White 07
18,45 RODA® Lite Blue P/N
16,95 RODA® Lite Red Violet 07
17,30 RODA® Lite Red Brown 07

↑ **ORION BLUE TPG 19-4229**

Drum 0,50 % INVADERM® LU
2,50 % SELLA® Fast Grey A
0,50 % SELLA® Fast Dark Brown A

Finishing 60,00 RODA® Lite White 07
7,25 RODA® Lite Blue P/N
19,40 RODA® Lite Orange Brown 07
13,30 RODA® Lite Red 07

↑ **SMOKED PEARL TPG 18-0000**

All RODA® Lite 07 formulations are applied on no-dyed crust and quantities are expressed in grams per liter.





TARGET:

- Reversible, stylish biker-boot with zip and elastic straps
- Semi-rigid padded bag with contrasting metal accessories
- Bootie made with printed calfskin and buckles





↑ **SEQUOIA** TPG 19-1333

↑ **GOLDEN YELLOW** TPG 15-0953

↑ **GALAPAGOS** TPG 18-5725

↑ **WINE TASTING** TPG 19-2118



Drum	0,50 % INVADERM® LU	
	2,60 % SELLA® Fast Red Brown A	
	0,40 % SELLA® Fast Bordeaux A	
Finishing	11,75	RODA® Lite White 07
	3,10	RODA® Lite Black SH
	0,80	RODA® Lite Violet Brown 07
	84,40	RODA® Lite Fuchsia 07

↑ **SEQUOIA** TPG 19-1333

Drum	0,50 % INVADERM® LU	
	2,50 % SELLA® Fast Yellow R	
	0,50 % SELLA® Fast Orange A	
Finishing	33,10	RODA® Lite White 07
	46,45	RODA® Lite Yellow 07
	16,90	RODA® Lite Red Brown 07
	3,55	RODA® Lite Orange 07

↑ **GOLDEN YELLOW** TPG 15-0953

Drum	0,50 % INVADERM® LU	
	1,80 % SELLA® Fast Green GDN	
Finishing	18,90	RODA® Lite White 07
	46,85	RODA® Lite Blue P/N
	30,05	RODA® Lite Lemon 07
	4,20	RODA® Lite Red Violet 07

↑ **GALAPAGOS** TPG 18-5725

Drum	0,50 % INVADERM® LU	
	2,00 % SELLA® Fast Brown DZ 150 %	
Finishing	10,85	RODA® Lite White 07
	6,70	RODA® Lite Blue P/N
	0,05	RODA® Lite Violet Brown 07
	82,50	RODA® Lite Fuchsia 07

↑ **WINE TASTING** TPG 19-2118

All RODA® Lite 07 formulations are applied on no-dyed crust and quantities are expressed in grams per liter.





TARGET:

- Woman's ankle riding boot with stitching and polishing on the tips
- Boot with eco-friendly leather sole and sock in stretch nappa leather
- Woman's travel bag with straps







↑ **SHALE** TPG 19-3903

↑ **SLATE BLACK** TPG 19-0814

↑ **CHOCOLATE** TPG 19-1317

↑ **DARK EARTH** TPG 19-1020



 National Bureau

Drum 0,50 % INVADERM® LU
3,00 % SELLA® Fast Black HM
2,00 % SELLA® Fast Brown DZ 150 %

Finishing 18,25 RODA® Lite White 07
15,90 RODA® Lite Blue P/N
25,40 RODA® Lite Red Violet 07
40,35 RODA® Lite Orange 07

↑ **SHALE TPG 19-3903**

Drum 0,50 % INVADERM® LU
3,80 % SELLA® Star Coffee
0,20 % SELLA® Fast Black HM

Finishing 13,00 RODA® Lite White 07
14,10 RODA® Lite Blue P/N
12,25 RODA® Lite Yellow 07
60,70 RODA® Lite Red Violet 07

↑ **SLATE BLACK TPG 19-0814**

Drum 0,50 % INVADERM® LU
1,20 % SELLA® Fast Dark Brown A
1,50 % SELLA® Fast Bordeaux A

Finishing 4,00 RODA® Lite White 07
11,00 RODA® Lite Blue P/N
6,50 RODA® Lite Violet Brown 07
78,55 RODA® Lite Fuchsia 07

↑ **CHOCOLATE TPG 19-1317**

Drum 0,50 % INVADERM® LU
3,50 % SELLA® Star Coffee
0,40 % SELLA® Star Copper

Finishing 5,50 RODA® Lite White 07
9,70 RODA® Lite Blue P/N
36,82 RODA® Lite Violet Brown 07
47,95 RODA® Lite Red Violet 07

↑ **DARK EARTH TPG 19-1020**

All RODA® Lite 07 formulations are applied on no-dyed crust and quantities are expressed in grams per liter.



Wool Protein



TARGET:

- Unlined woman's trench boots
- Unisex stringed boots with leather cut lines
- Unlined sports bag with suede buckles





↑ **BURNT HENNA** TPG 19-1540

↑ **CINNAMON** TPG 18-1345

↑ **SUN FLOWER** TPG 16-1054

↑ **SCARLET FLAME** TPG 18-1662





Wool Protein

Drum	0,50 % INVADERM® LU	
	3,00 % SELLA® Fast Brown CR	
	1,00 % SELLA® Fast Red RTN	
Finishing	8,80	RODA® Lite White 07
	1,70	RODA® Lite Black SH
	6,45	RODA® Lite Orange Brown 07
	83,00	RODA® Lite Fuchsia 07

↑ BURNT HENNA TPG 19-1540

Drum	0,50 % INVADERM® LU	
	1,00 % SELLA® Fast Red A	
	2,00 % SELLA® Fast Red Brown A	
	0,50 % SELLA® Fast Orange A	
Finishing	23,95	RODA® Lite White 07
	0,10	RODA® Lite Blue P/N
	39,05	RODA® Lite Red Brown 07
	36,90	RODA® Lite Fuchsia 07

↑ CINNAMON TPG 18-1345

Drum	0,50 % INVADERM® LU	
	1,20 % SELLA® Fast Yellow R	
	2,80 % SELLA® Fast Orange 2GC	
Finishing	33,50	RODA® Lite White 07
	0,40	RODA® Lite Blue P/N
	53,00	RODA® Lite Yellow 07
	13,10	RODA® Lite Orange 07

↑ SUN FLOWER TPG 16-1054

Drum	0,50 % INVADERM® LU	
	4,00 % SELLA® Fast Red A	
Finishing	5,00	RODA® Lite White 07
	10,00	RODA® Lite Yellow 07
	10,00	RODA® Lite Orange Brown 07
	75,00	RODA® Lite Red 07

↑ SCARLET FLAME TPG 18-1662

All RODA® Lite 07 formulations are applied on no-dyed crust and quantities are expressed in grams per liter.





TARGET:

- Women's boots with uppers in suede and legging in shiny lambskin
- Everyday bag with pleated sides and straps
- Unlined women's bucket-bag with decorated belt and double-face tassels





↑ **EVENING BLUE** TPG 19-3815

↑ **DARK CHEDDAR** TPG 15-1150

↑ **INDIGO** TPG 19-3215

↑ **REFLECTING POND** TPG 19-4326



 Chess Match

Drum	0,50 % INVADERM® LU	
	3,00 % SELLA® Fast Violet RL	
	1,40 % SELLASET® Black BR	
Finishing	14,50	RODA® Lite White 07
	41,00	RODA® Lite Blue P/N
	44,45	RODA® Lite Orange 07

↑ **EVENING BLUE** TPG 19-3815

Drum	0,50 % INVADERM® LU	
	0,70 % SELLA® Fast Yellow R	
	3,00 % SELLA® Fast Orange A	
Finishing	29,45	RODA® Lite White 07
	0,15	RODA® Lite Blue P/N
	53,30	RODA® Lite Yellow 07
	17,10	RODA® Lite Orange 07

↑ **DARK CHEDDAR** TPG 15-1150

Drum	0,50 % INVADERM® LU	
	3,00 % SELLA® Fast Violet RL	
	1,00 % SELLASET® Black BR	
Finishing	16,50	RODA® Lite White 07
	30,40	RODA® Lite Blue P/N
	53,00	RODA® Lite Fuchsia 07

↑ **INDIGO** TPG 19-3215

Drum	0,50 % INVADERM® LU	
	1,20 % SELLA® Fast Blue BBN	
	1,20 % SELLA® Fast Navy G	
Finishing	17,25	RODA® Lite White 07
	62,45	RODA® Lite Blue P/N
	11,55	RODA® Lite Ochre 07
	8,70	RODA® Lite Red Violet 07

↑ **REFLECTING POND** TPG 19-4326

All RODA® Lite 07 formulations are applied on no-dyed crust and quantities are expressed in grams per liter.



TFL, always ahead of time, answers the world's latest demands with new collections, new collaborations, new materials, new fields of research in the speciality chemical sector. The finishing of leathers goes from litres to meters, raw materials come from renewable sources and innovative solutions that save water in the dyeing and finishing phases – e.g. osmotic injection technique – are being launched.

The fittings designed with these innovative soft and shiny leathers delude us into living in nature, from coverings in soft panels in vegetalised lambskin resembling a tobacco leaf, to water-repellent nubuck calfskin diamonds, to the finishing touches of vegetable tanned fittings – complements that radiate the light reflected in the rooms with a pleasant scent of bergamot and aloe.

Approaching, sitting down, resting your back on a log and relaxing, opens up to Silvo-therapy which is based on the ancient idea of recovering and well-being through trees. Strengthening the chromatic ties of the powder tones with full colours on chrome-free leathers. The contrast of greased floaters with full-grain leathers with a tactile touch, due to resins and waxes to be combined with brilliant effects of enamel-polished polyurethanes and pearly powdered dusting with silica resins, which will help in the construction of environments closer and closer to the needs of man in terms of correctness and comfort.

Future cars will be a cocoon like your own home, a living room where you can rediscover the pleasure of pastel colours in the soft full grain leathers integrated by tailored seams, nubuck anti-soiling surfaces and printed leathers with pleasant three-dimensional effects to clean and reflective tones that conceal touch solutions.

THEMES:

- Digital Interiors
- Clean Landscape







TARGET:

- Car headrest and armrest
- Inserts for car seats
- Punctured sofas





↑ **IRIS ORCHID** TPG 17-3323

↑ **TANGERINE TANGO** TPG 17-1463

↑ **CAMELIA ROSE** TPG 17-1930

↑ **OLD GOLD** TPG 15-0955





Digital Interiors

Drum	0,50 %	INVADERM® LU
	4,00 %	SELLASOL® TN-FF liq.
	2,20 %	SELLA® Fast Red F
	0,60 %	SELLA® Fast Violet RL
Finishing	10,00	RODA® Lite White 07
	2,30	RODA® Lite Blue P/N
	85,00	RODA® Lite Fuchsia 07
	2,70	RODA® Lite Orange 07

↑ IRIS ORCHID TPG 17-3323

Drum	0,50 %	INVADERM® LU
	3,00 %	SELLA® Fast Orange A
	1,20 %	SELLA® Fast Red A
Finishing	10,00	RODA® Lite White 07
	20,00	RODA® Lite Yellow 07
	70,00	RODA® Lite Orange 07

↑ TANGERINE TANGO TPG 17-1463

Drum	0,50 %	INVADERM® LU
	4,00 %	SELLASOL® TN-FF liq.
	1,00 %	SELLA® Fast Scarlet L
	3,00 %	SELLA® Fast Red RTN
Finishing	10,00	RODA® Lite White 07
	10,00	RODA® Lite Yellow 07
	67,00	RODA® Lite Fuchsia 07
	3,00	RODA® Blue P/N

↑ CAMELIA ROSE TPG 17-1930

Drum	0,50 %	INVADERM® LU
	1,50 %	SELLA® Fast Yellow 4GL
	2,50 %	SELLA® Fast Yellow R
Finishing	0,05	RODA® Lite Blue P/N
	10,45	RODA® Lite Orange Brown 07
	89,20	RODA® Lite Lemon 07
	0,40	RODA® Lite Orange 07

↑ OLD GOLD TPG 15-0955

All RODA® Lite 07 formulations are applied on no-dyed crust and quantities are expressed in grams per liter.





TARGET:

- Inter-twined frames for sofas and small armchairs
- Heat-molded seats
- Lounger for indoors





↑ **CASHEW** TPG 17-1137

↑ **PUMPKIN** TPG 17-1449

↑ **DEEP LAKE** TPG 18-4834

↑ **SLEET** TPG 16-3916





Clean Landscape

Drum	0,50 % INVADERM® LU	
	1,50 % SELLA® Fast Red Brown A	
	1,50 % SELLA® Fast Havana A	
Finishing	38,30	RODA® Lite White 07
	2,35	RODA® Lite Blue P/N
	6,35	RODA® Lite Violet Brown 07
	53,05	RODA® Lite Orange 07

↑ CASHEW TPG 17-1137

Drum	0,50 % INVADERM® LU	
	1,00 % SELLA® Fast Orange A	
	1,40 % SELLA® Fast Brown HC	
Finishing	5,00	RODA® Lite White 07
	10,00	RODA® Lite Yellow 07
	75,00	RODA® Lite Red 07
	10,00	RODA® Lite Orange 07

↑ PUMPKIN TPG 17-1449

Drum	0,50 % INVADERM® LU	
	2,00 % SELLA® Fast Green GM	
	0,40 % SELLA® Fast Navy A	
Finishing	30,30	RODA® Lite White 07
	46,35	RODA® Lite Blue P/N
	23,35	RODA® Lite Lemon 07
	0,05	RODA® Lite Orange 07

↑ DEEP LAKE TPG 18-4834

Drum	0,50 % INVADERM® LU	
	2,00 % SELLASOL® TN-FF liq.	
	0,70 % SELLA® Fast Grey C-LL	
Finishing	84,25	RODA® Lite White 07
	3,15	RODA® Lite Blue P/N
	4,20	RODA® Lite Yellow 07
	8,40	RODA® Lite Fuchsia 07

↑ SLEET TPG 16-3916

All RODA® Lite 07 formulations are applied on no-dyed crust and quantities are expressed in grams per liter.





