



Inspiring – TFL Colour Trends

» Spring-Summer 2021

TFL – Great chemicals. Excellent advice.

TFL's seasonal fashion inspirations



Colour Trend Catalogue for the leather industry

Welcome to TFL's new Colour Trend Catalogue for the season Spring-Summer 2021. In this brochure we present the colour trends for leather garment, footwear, accessories and upholstery.

In the following pages we will highlight our SELLA® colour range. SELLA® dyes are anionic powder dyes specially selected for the drum dyeing of all article types.

TFL presents the fashion colour trends for leather garment, footwear, accessories and upholstery.

We have divided the colour trends into “Wearing” and “Living”, devoting a section to each within the publication. Wearing comprises inspirations and colour trends for garments, footwear and accessories. The Living section features all colours that will decorate the season's interior design.

Advantages for TFL customers: knowledge of the future colour preferences and trends helps designers, manufacturers and tanners to stay one step ahead of the market. In combination with the fashion colour trends, TFL provides information about the appropriate dyes and dye applications.

The products provide many advantages such as:

- brilliant and intense shades
- good general fastness properties
- excellent cost/performance ratio

In addition, we present the TFL RODA® Lite 07 casein-free range of finely dispersed, anionic water-based pigments with overall good fastness properties and excellent covering power. RODA® Lite 07 pigments can be used for shoe and leather goods, as well as upholstery and garment leathers.

TFL hopes you will find this catalogue of real value in your day-to-day decision making on colour.

www.tfl.com



Wearing

With the arrival of every new season fashion inevitably tends to crumble into a thousand superimposable memories, forming a tangled web of indistinguishable ideas. This season two distinct, unforgettable trends stand out from the rest, which are "soft nuances" and the "digital outfit".

The first features pastel colours that are high in luminosity and low in saturation. These will dictate the trends for all forms of fashion-led products. From primula yellow, powder blue and lilac to sugar-paper blue, mint green and subtler shades of pink; these pastel tones are not limited to womenswear, as we also see the men's wardrobe dipping into a box of school-style coloured chalks, for a selection of soft shades.

Accessories will steal the spotlight across all collections by all brands. Lambskin and nubuck calfskin are the most popular for the season's more elegant, sophisticated footwear, which features an outstandingly silky look and feel, complemented by glossy reptile-embossed leathers with dazzling pearly reflections.

The contrast between buffed leathers from all over the world and glossy marbled leather created by skilled master craftsmen or on ever-more advanced machinery, give more traditional styles of women's footwear a fresh new look and sculpt accessories into designs that are more reminiscent of futuristic architectural wonders.

THEMES:

- Indochina Travel
- Miss Sunshine
- Pastell Princess
- Athletic Cyborg

The Millennial Generation will be immensely inspired by this clear return to a classic look and to glossy and varnished leathers, as they have never experienced these materials, grains, thicknesses or techniques.

The second theme differs drastically from the first. It denotes an even broader use of digital products across the entire fashion world that enriches items with innovative functions, such as incorporating processors into leather briefcases, backpacks or trolleys that communicate via apps with smartphones to create smart products.

It is almost impossible to successfully predict future trends in this market, but one thing is sure: leather will always be the absolute must if it can integrate these new tools with the right finishes. In a world where people are becoming more nomadic and traveling more frequently and for longer, these finishes not only need to protect leather from daily wear and tear, but also from the weather.

Leather footwear and clothing will favour comfortable, lightweight, transformable solutions and demand tanning products to support light-weight, tear-resistance and different levels of protection for futuristic sneakers and multitasking outerwear.



Indochina Travel

Treasures from travelling: emotions turn fashionable where inspiration comes from Eastern-flavoured elegance. Men are becoming more fashion-oriented, reflecting a change in the masculine role model.

Sheepskin, goatskin and small calfskin suedes with a two-tone effect.

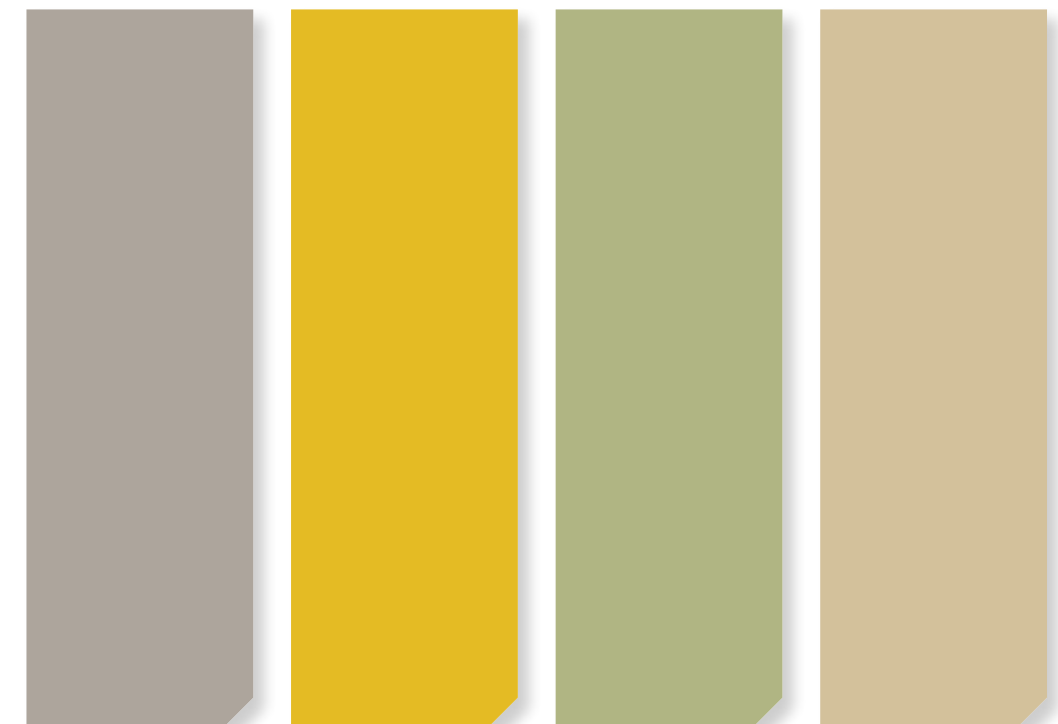
Trends: Treasures collected during our Indochina travel inspiring tailor made men's suits and accessories, to re-invent a new sartorial code with enhancing eye-catching leather. The topic covers particularly brilliant pastel colours. In addition we see that sheen and silky handle of chrome-free tanned lamb suede can be enhanced with CORIPOL® GU and RODA® Mod 5129 for chemical milling; double-face finishing on the grain side, with RODA® Cryl R 504.

Soft calfskin and chrome-free goatskin retanned with SELLATAN® FL Liq and TANNESCO® CPR Liq create new opulent suede. Tie-dyeing-effect achieved by design-roller using RODA® Fix 6271/B and applying RODA® Wax 2014 for an elegant faded look.

Wet-white pretanned European calfskins are retanned with TANNESCO® FC and softened with CORIPOL® MK to enhance a glove type fitting of the shoe. The grain side is buffed and embossed with negative plates to create micro-textured effects, and enhanced with RODA® Wax 5044.

TARGET:

- Desert boots with rattan and rubber soles and liners
- Flight jackets
- Soft moccasins with foam soles



ZAMBESI
TPG 16-1305

SEGALE
TPG 14-0755

FEDERAL
TPG 15-0523

DUKE
TPG 14-1110



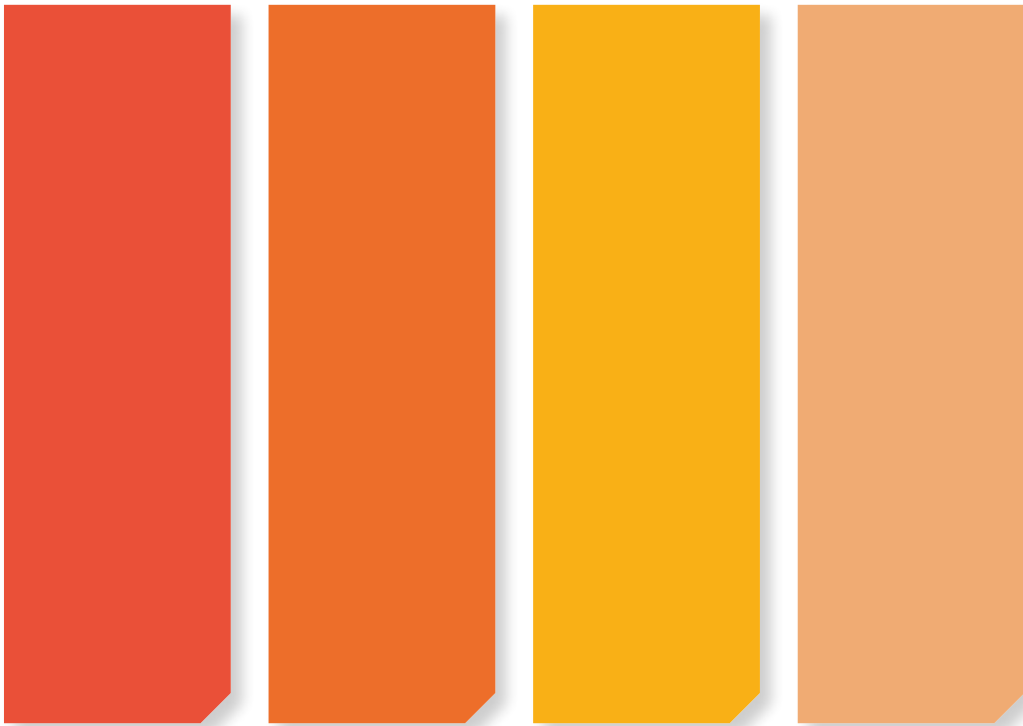
Miss Sunshine

Charming oriental styles: rich and warm colours evoke pleasant and cheerful feelings; influences from reptile printing.

Chrome-free full grain leather vegetalised with gloss finishes.

Trends: It's a new day for all metallic influences on reptile articles; bright crocodile and snake straight-leg leather trousers and maximalist bags are a must-have. Bovine wet-white pretanned with SELLATAN® LI-G Liq are retanned using SELLATAN® HIT and fatliquored with CORIPOL® SV, to achieve extreme fullness and softness. This article is inspired by high quality Cuoietto footwear leather but reaching out to brilliant, vivid colours. Embossed with reptile aluminium plates to highlight the 3-dimensional effect; using RODA® Wax 2009/N and fixing with RODA® Pur 5427/N, for a modern glossy look. European chrome tanned bovine retanned with MAGNOPAL® IPF and SELLASOL® HFN-F Liq, creating soft mellow fullness. 3-dimensional deep embossing finished with a metallic effect using RODA® Poliperl pigments.

- TARGET:**
- Safari-style travel set (with crocodile-embossed moccasins and backpack)
 - Clutch bags with an embossed flap
 - Soft shopping bag with embossed reptile leather



FIREFLIES TPG 17-1463 **SING** TPG 17-1349 **GRENADE** TPG 15-1062 **ROMANCE** TPG 14-1133





Pastell Princess

Pastel tones acquire a new identity: succeeding in winning over the hearts of all women, as well as in arousing the interest of a male audience.

Soft pastel nubuck.

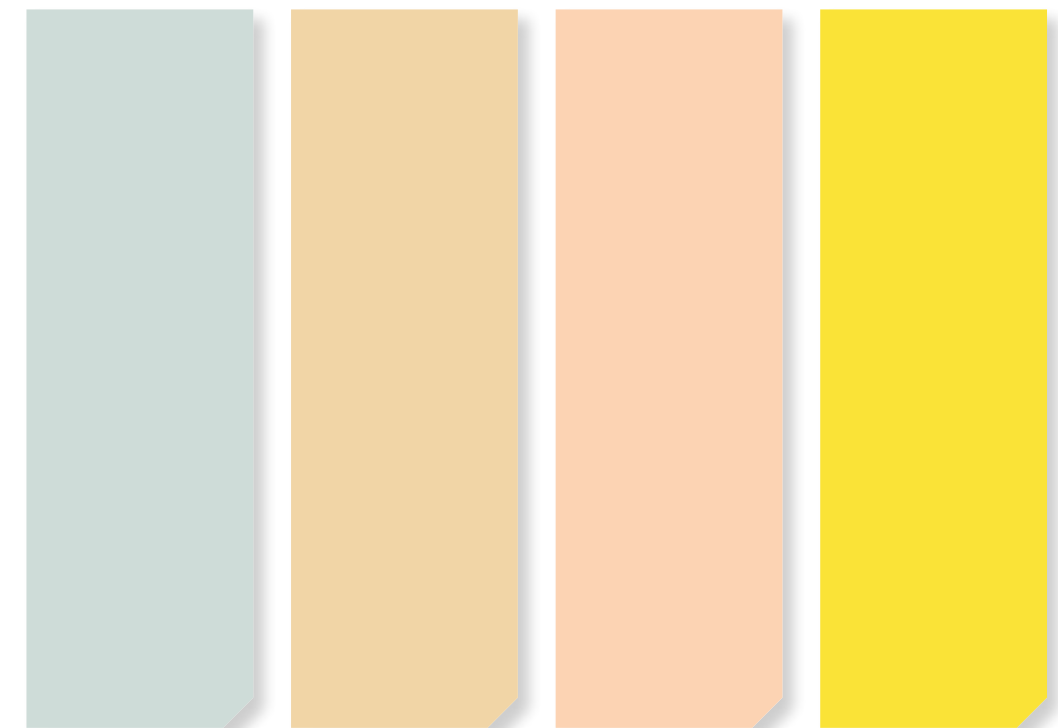
Trends: Free your mind by wearing elegant, modern pastel pieces with saturated tonality. American wet-blue retanned with TANNESCO® CPR Liq and waterproofed by using DRYWALK® FAT. Superior levelness and clean pastel shades can be achieved by using SELLASET® dyes and TANNESCO® CPR Liq in the capping process, instead of chrome.

Indian goatskin tanned with TANNESCO® FC and TANNESCO® CPR Liq are wet-buffed to achieve crust leather with very tight compact fibres, ready for clean pastel dyeing processes: lightly finished with RODA® Cor HTP pigments and RODA® Cryl 108, the combination of these products helps to upgrade the selection without sacrificing the nubuck effect.

European cow wet-blue is neutralised with SELLASOL® SF before softening with CORIPOL® GU and filling with MAGNOPAL® IPF, to achieve a super-soft nappa. The flesh side is sealed and finished by applying the RODA® Micro technology and the final touch is realised in an overnight milling process where RODA® Feel N4 and RODA® Feel S 2075 are added.

TARGET:

- Perforated and punched sneakers
- Unisex gym shoes
- Soft sports bags



FRESH
TPG 12-5303

JANELLE
TPG 12-0817

KATY
TPG 13-1026

CHERYL
TPG 12-0752

Athletic Cyborg

Comfortable and light sporty style: a perfect balance between fashion and the digital environment.

Leathers finished with RODA® Micro Tec.

Trends: Hop, Skip, Touch and Jump, new digital handbags and sneakers are instantly transforming your sportswear. Dynamic and eye-catching colours give a futuristic feeling.

Low grade Australian wet-blue is turned into a firm crust; tightness is further enhanced by RODA® Cryl 5037 and upgraded with RODA® Care 5754, combined with RODA® Micro Bond A, ensures a good anchorage of the RODA® Micro film application. Classic wet-blue based lambskin crust serves as a base to utilise RODA® Micro Tec for a light natural finishing.

RODA® Micro Bond A in the first application step ensures adhesion of the RODA® Micro film, followed by RODA® Fix 6271/B.

A wet-blue calf split retanned and fatliquored for a short nap suede article, is finished with RODA® Micro Tec to give it a double-face effect.

TARGET:

- Soft moccasins with extra-light soles
- Windbreaker-style jackets and casual shoes
- Multi pocketed safari jackets with walking shoes



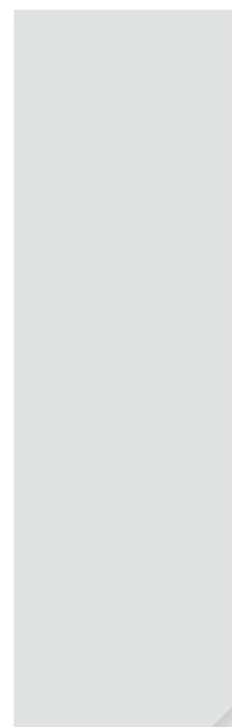
CARDIFF
TPG 19-3953



JESSIE
TPG 17-1563



PRINCE
TPG 16-5942



CRICKET
TPG 12-4306



Living

With a keen eye on how tastes are forever changing in everything from new technologies to lifestyles, our latest Living Trends updates the focus on the home, as the nerve centre of our world. The home may be our private haven, but it is also the place where we work, study and have a good time.

The keyword is freedom; freedom to be daring with colours and to have fun with substrates and textures, in order to create strikingly different ambiances to cope with the day-to-day frenzy of constantly adapting our homes to suit our needs, moods and the seasons.

THEMES:

- Violet Rhapsody
- Velvet Underground

Such a changeable, versatile setting cries out for hybrid, takeaway furnishings that go with everything, such as moveable soft nappa calfskin armchairs complemented by cushions featuring geometric designs and patterns inspired by the biggest designer names from the 1980s, bookcase lights covered with soft nubuck floater calfskin dyed in vibrant, stain-proof colours, and consoles and drop-leaf tables covered with water-repellent leather where we can enjoy our meals and keep all our essential bits and bobs within easy reach.

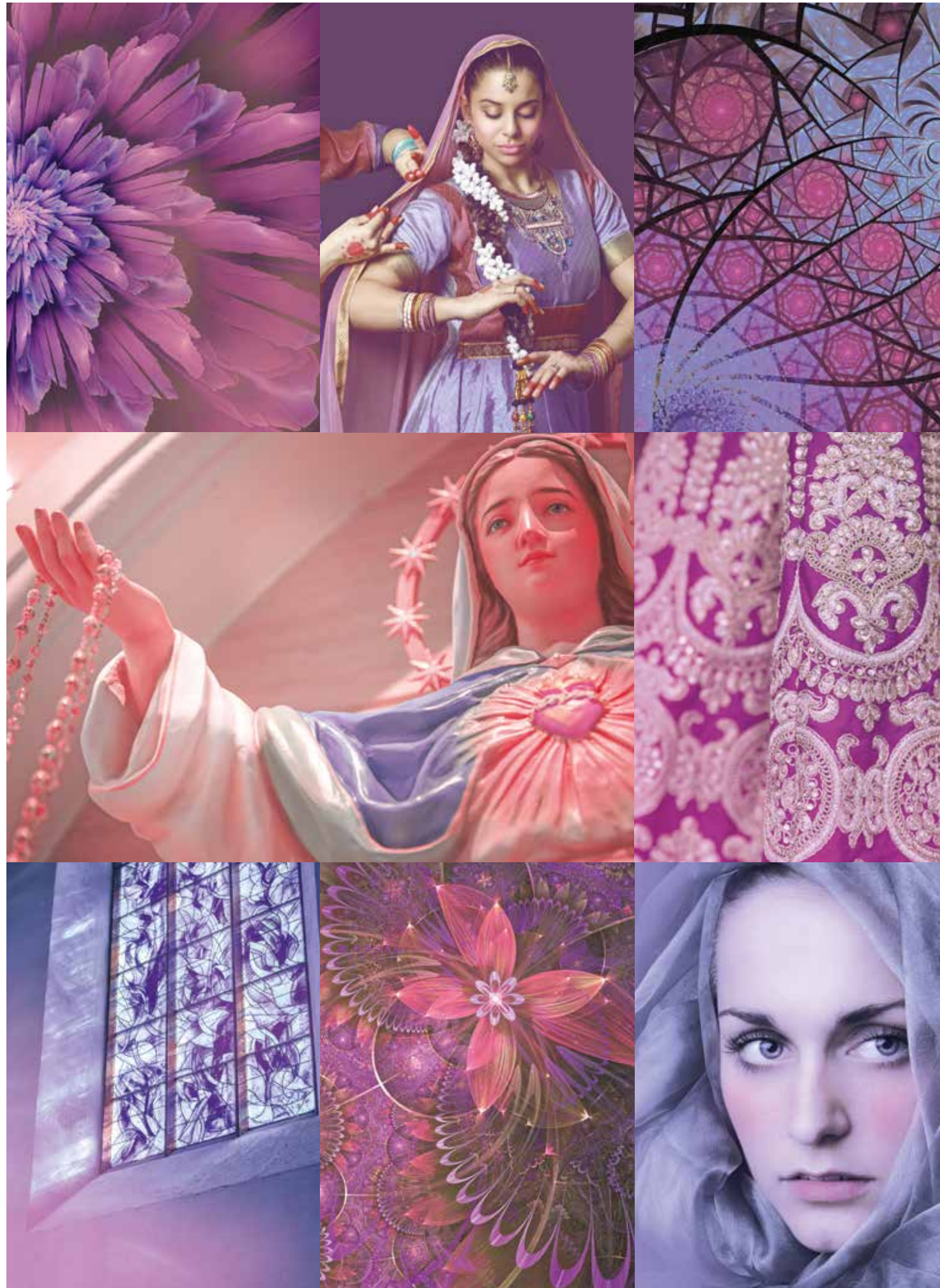
Modern homes keep getting smaller so, make way for smart, multipurpose, compact furniture that takes up no room at all. Ideal is a kitchen table with a reversible top with laminate wood on one side and vegetable-tanned calfskin in neutral tones on the other that can double as an office desk, or the tops of gourmet counters that can be extended to accommodate niches by the hob that are covered with leathers finished with two-tone brushed-on effects.

In the living room sofas can be personalised into an infinite number of seating solutions with maxi calf split cushions, ink-jet printed to brighten up the made-to-measure comfort. Why not intersperse these with table tops featuring bull hide fronts retanned with vegetable products to be matched with tropical woods or multicoloured marble, and relaxation areas covered with soft full grain leathers dyed in bright, flashy colours.

Shelves covered with nubuck surfaces micro-embossed with goat grains and finished with waxy translucent effects also act as seating spaces and steps to the upper levels, maybe even mezzanines which are so back in vogue. Mezzanines maximise space in any home and are fabulous areas for soft long-hair rugs, such as yak or Tibetan goat, framed with soft intertwined lambskin.

Finally, simple, natural materials are all the rage again in the bedroom. Pure cotton or pure linen for the pillow cases teamed-up with extra-light duvets, cashmere blend throws and soft suede goatskin cushions that are velvety and silky soft to the touch. The statement piece is a divan bed with a removable quilted fabric covering matched with a capitonné headboard styled in extra-soft nappa calfskin.

The coordinated soft furnishings of choice are strictly recyclable and compostable. They must be environmentally friendly throughout their life, from production to post-consumer disposal, so we advise the tanning industry to publicise and promote every innovation that offers a responsible solution for consumers who are now increasingly more aware of their planet. As we embrace the concept of ethical design, tanneries should promote new tanning products that are free from heavy metals and solvents; these can be dyed in warm, beautifully burnished nuances and accompanied by a polychromatic choice of green hues worthy of a boreal forest.



Violet Rhapsody

Perfect inspiration from beautiful lilac shades and sacred designs: the revival of violet embraces mixed styles, even contradicting each other.

Vibrant shades for chrome-tanned full-grain calfskins.

Trends: Colour expresses "feel- good" and Violet is the new tonality to renovate intimate and immersive experiences into the living area. Sacred-themed colours and paintings in the living room make your house into a home.

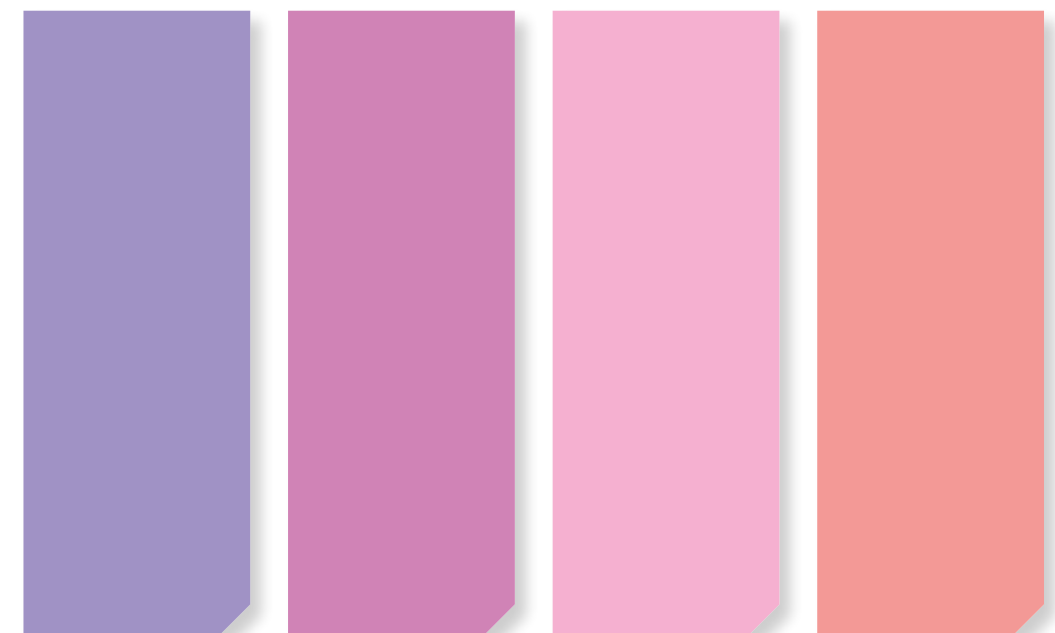
Chrome tanned European cow hides retanned with TANNESCO® HN Liq and SELLATAN® FL Liq, are fatliquored with CORIPOL® MK to ensure a deep white base, without post yellowing. After intermediate drying, the article is dyed with lightfast metal complex SELLA® FAST dyes to create a low weight super soft nappa. In finishing, the fastness is maintained with RODA® Cor HTP pigments and RODA® Base 5698 and fixed with RODA® Fix 5792/N.

Wet-white European bull hide is retanned using SELLATAN® HIT and CORIPOL® ESU; embossing in crust with a deer skin grain; before design roller tipping with RODA® Car Dull 92/N, and finishing with RODA® Base 5073.

Tightness after milling combined with inner softness and fullness isn't a contradiction. The combination of MAGNOPAL® PS-N, MAGNOPAL® PGN and MAGNOPAL® TGR imparts tightness, grain elasticity and a flat milling pattern; whereas SELLATAN® TMC and SELLATAN®GS-B Liq provide fullness with a levelling/dispersing effect. Fatliquoring with the natural softening power of CORIPOL® SV and CORIPOL®BZE-N, combined with the synthetic lubricating effect of CORIPOL® DX-1202, results in a round and tight crust with a warm, nourished handle, suitable for long milling.

TARGET:

- Small capitonné armchairs
- Leather lined chests of drawers
- White lacquered wooden table tops for living rooms



FREAKY
TPG 16-3823

DRAKE
TPG 16-3320

FEELING
TPG 15-1423

BENNY
TPG 14-2710

Velvet Underground

3-dimensional effects are the key to creating the style: using bluish colours to induce a relaxing and soothing atmosphere.

Embossed American bovine leathers.

Trends: Zero waste and 3-D printing are the "Mantra" and combine humble recycled materials together with innovative production techniques. These are the inputs to create spectacular accessories and interiors.

South American wet-blue treated with MAGNOPAL® PS-N and MAGNOPAL® TGR as well as SELLATAN® TMC and SELLATAN® GS-B Liq, imparts tightness, grain elasticity and fullness. Fatliquoring with CORIPOL® SV, CORIPOL® BZE-N and CORIPOL® GU results in a round crust with a warm nourished handle; finished with an excellent print retention, using RODA® Base 5103, enhanced by using RODA® Fix 5188/N Gloss by tipping roller.

Softness with the lowest impact on weight can be fulfilled by applying CORIPOL® LE in combination with MAGNOPAL® SOF and MAGNOPAL® IPF on Brazilian zebu wet-blue. After intermediate drying, the finishing is made with RODA® Base 5514, thanks to its water-resistance; it supports the next operation of negative plate embossing, before wetting-back.

- TARGET:**
- Tufted mattresses for outdoor seating
 - Headboards for beds and divans

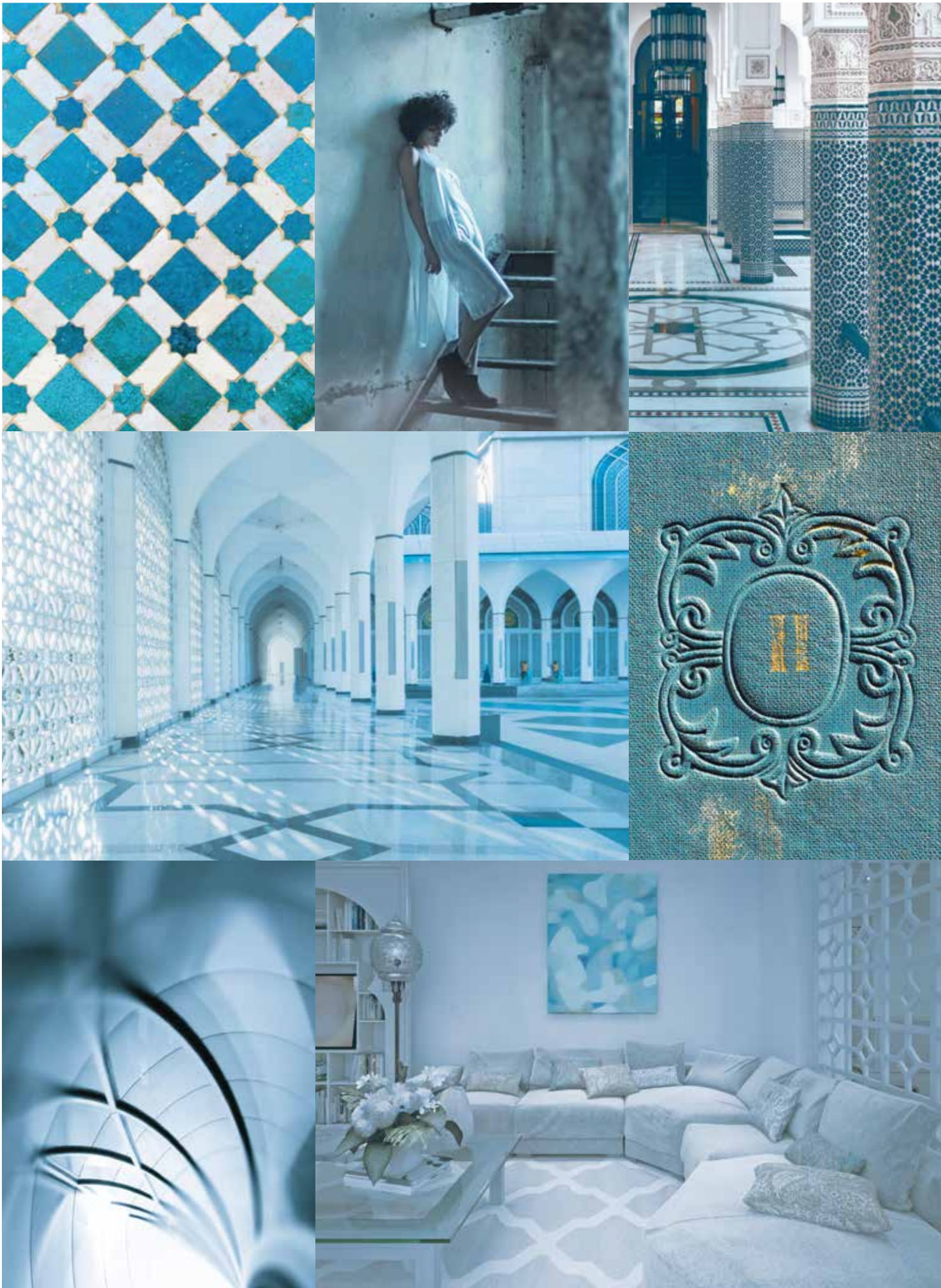


LIZAR
TPG 14-4317

TAYLOR
TPG 15-4323

SYMPHONY
TPG 16-4725

SUGAR
TPG 17-4023



Natural appearance without overloading the grain

Explore finishing versatility: From fashionable splits to high wearing sport shoes

TFL MICRO TEC is an innovative technology for the finishing of leather articles (including splits) with a substantially lower add-on compared to standard finishing, and at the same time reduces the number of processing steps. The result is a more natural appearance and improved defect coverage.

The range consists of three ultra-thin (18µm) polyurethane base-coat films:

- RODA® Micro Black – for black shades
- RODA® Micro Lucent – for bright/transparent shades
- RODA® Micro White – for white shades

And two adhesive binders:

- RODA® Micro Bond A – a thermo-adhesive binder to ensure the anchorage of RODA® Micro film to the leather
- RODA® Micro Bond B – an inter-coat adhesive binder to ensure the anchorage of the final color and top coat finishes to the RODA® Micro film

Less finishing add-on in 3 steps



Step 1
RODA® Care products mixed with thermo-adhesive RODA® Micro Bond A for good coverage of defects.



Step 2
Film application RODA® Micro Black / White / Lucent by roller or plate. Then plating or embossing depending on article requirements, such as 110°C/70 kg.



Step 3
Color coat with RODA® Micro Bond B and top coat application as standard.

TFL MICRO TEC – for natural looking accessories

TFL MICRO TEC is a unique technology in our range and it allows to apply an ultra-thin and even base-coat layer with outstanding physical properties which can thereafter be top-coated with any desired finish. Furthermore, RODA® Micro Film can be applied by rotopress with no initial investment and also integrated into production lines with minimal room occupancy.

The major benefits of this innovative finishing technology:

- Natural article appearance without overloading the grain
- Good defect coverage
- Versatility of the final finishing
- Good print retention
- High physical resistances (such as flexing)
- No capex investment

✦ Ecology

Significant reduction of add-on and over spray of the finishing products.

✦ Product Design

PU film is applied on polyester foil which is decomposable in water.



✦ Safety

Minimizing the risk of collecting dirt in the finishing by applying a pre-dried film as base coat.

✦ Performance

Good coverage of defects with less add-on for a more natural appearance and high physical resistance.



TFL MICRO TEC –
Good coverage of defects
with less add-on



Glossary Wet-end

CORIPOL® AV – Fatliquoring agent for soft nappa, furniture and automotive leathers

Is an anionic fatliquoring agent, based on a combination of modified sustainable natural & synthetic softening agents. It has good stability to electrolytes, hard water and in chrome and aluminium tanning floats. CORIPOL® AV imparts good inner softness and a pleasant handle; it is the ideal main fatliquor for all soft articles like upholstery, garment and automotive leathers. It can also be used as a companion fatliquor for shoe upper and handbag leathers when combined with e.g. CORIPOL® ESA-N.

CORIPOL® GU – Garment & Upholstery fatliquor, for pronounced softness

This new fatliquor imparts an outstanding fluffy inner softness with a nourished surface touch and is ideal for all kinds of soft, light-weight leathers.

CORIPOL® GU features very good heat yellowing and light fastness properties, and imparts a uniform and fine milling pattern to articles from both wet-blue & FOC origin. All of the above is achieved with the added bonus that the product is neutral in odour!

MAGNOPAL® IPF – Innovative technology for lightweight leathers

Filling empty and loose structured hides and skins is more important than ever; especially with declining hide quality. Traditional tanning agents and fillers are by far too small to fill the large empty spaces in the hide structure, especially those in the looser areas of the flanks and bellies.

MAGNOPAL® IPF targets these voids, imparting a pronounced selective filling and as a consequence, an interesting substance-levelling effect, from backbone to belly.

In parallel, and just as importantly, the extremely low-density character of MAGNOPAL® IPF allows the tanner to build into his recipes a reduction in specific and area weight, lightweight with selective filling!

MAGNOPAL® SOF – Polymeric based softening agent

Is based on an anionic polymer with excellent softening properties and is applied alone or in combination with conventional anionic fatliquors. The product is fixed in a nearly un-extractable form to the leather fibre and is therefore ideally suited for washable and dry cleanable garment- and shoe nappa from hides and skins. A combination of MAGNOPAL® SOF and e.g. DRYWALK® FAT is recommended for water resistant and washable shoe upper leathers. MAGNOPAL® SOF is highly stable against light and heat-yellowing and is therefore suitable for white upper leathers for vulcanised or injection moulded shoes.

TANNESCO® CPR Liq – Versatile mineral tanning agent

Is a masked zirconium complex offering technical solutions as a capping agent, and in pre-tanning and retanning. It reacts mildly when compared with chromium & aluminium sulfate, and the extremely acidic zirconium sulfate. TANNESCO® CPR Liq offers a toxicological and environmentally friendly alternative, when tight grain articles with excellent dyeability are required.



Glossary Finishing

RODA® Base 5073

Is a ready to use compound recommended for full grain or slightly corrected grain leather, which gives good resistance to yellowing, light and heat.

RODA® Cryl 5037

Is an acrylic resin used for the impregnation of buffed leather, whenever firmness of the grain needs to be improved.

RODA® Cryl R 504

Is a very soft acrylic which forms a soft film with medium stickiness and good coverage.

It is suitable for the finishing of shoe upper, automotive, upholstery and garment; and for full or corrected grain leathers.

RODA® Feel N4

Is a touch modifier compatible with anionic system, which gives a waxy feel that is particularly enhanced after light ironing.

RODA® Fix 5188/N Gloss

Is an NEP-free and NMP-free, very glossy top coat with a medium softness and a pleasant touch.

RODA® Wax 2014

Is used to obtain a re-polishable effect, with a very natural appearance.





Inspiring – TFL Colour Trends

» Spring-Summer 2021



TFL – Great chemicals. Excellent advice.





With the arrival of every new season fashion inevitably tends to crumble into a thousand superimposable memories, forming a tangled web of indistinguishable ideas. This season two distinct, unforgettable trends stand out from the rest, which are "soft nuances" and the "digital outfit".

The first features pastel colours that are high in luminosity and low in saturation. These will dictate the trends for all forms of fashion-led products. From primula yellow, powder blue and lilac to sugar-paper blue, mint green and subtler shades of pink; these pastel tones are not limited to womenswear, as we also see the men's wardrobe dipping into a box of school-style coloured chalks, for a selection of soft shades.

Accessories will steal the spotlight across all collections by all brands. Lambskin and nubuck calfskin are the most popular for the season's more elegant, sophisticated footwear, which features an outstandingly silky look and feel, complemented by glossy reptile-embossed leathers with dazzling pearly reflections.

The contrast between buffed leathers from all over the world and glossy marbled leather created by skilled master craftsmen or on ever-more advanced machinery, give more traditional styles of women's footwear a fresh new look and sculpt accessories into designs that are more reminiscent of futuristic architectural wonders.

The Millennial Generation will be immensely inspired by this clear return to a classic look and to glossy and varnished leathers, as they have never experienced these materials, grains, thicknesses or techniques.

The second theme differs drastically from the first. It denotes an even broader use of digital products across the entire fashion world that enriches items with innovative functions, such as incorporating processors into leather briefcases, backpacks or trolleys that communicate via apps with smartphones to create smart products.

It is almost impossible to successfully predict future trends in this market, but one thing is sure: leather will always be the absolute must if it can integrate these new tools with the right finishes. In a world where people are becoming more nomadic and traveling more frequently and for longer, these finishes not only need to protect leather from daily wear and tear, but also from the weather.

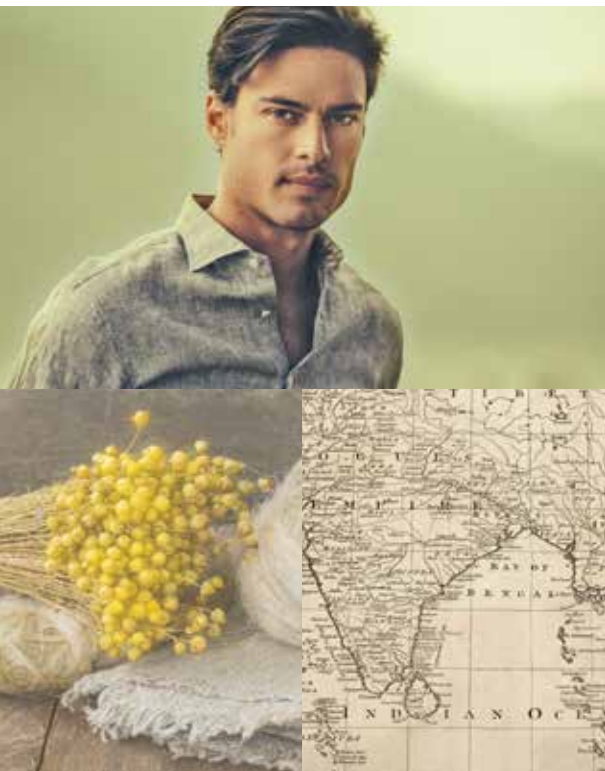
Leather footwear and clothing will favour comfortable, lightweight, transformable solutions and demand tanning products to support light-weight, tear-resistance and different levels of protection for futuristic sneakers and multitasking outerwear.

THEMES:

- Indochina Travel
- Miss Sunshine
- Pastell Princess
- Athletic Cyborg







TARGET:

- Desert boots with rattan and rubber soles and liners
- Flight jackets
- Soft moccasins with foam soles







Indochina Travel

↑ **ZAMBESI** TPG 16-1305

↑ **SEGALE** TPG 14-0755

↑ **FEDERAL** TPG 15-0523

↑ **DUKE** TPG 14-1110

www.tfl.com





Drum	0,20 % SELLA® Fast Brown DS	
	0,20 % SELLA® Fast Grey NL	
	2,00 % SELLA® Fast Beige AR	
Finishing	86,80	RODA® Lite White 07
	1,60	RODA® Lite Black SH
	6,00	RODA® Lite Lite Ochre 07
	5,50	RODA® Lite Violet Brown 07

↑ ZAMBESI TPG 16-1305

Drum	1,50 % SELLA® Fast Yellow 4GL	
	1,50 % SELLA® Fast Yellow R	
Finishing	40,00	RODA® Lite White 07
	20,00	RODA® Lite Ochre 07
	40,00	RODA® Lite Lemon 07

↑ SEGALE TPG 14-0755

Drum	2,00 % SELLASOL® TN-FF liq	
	0,05 % SELLA® Fast Green GM	
	0,30 % SELLA® Fast Olive 2G	
Finishing	74,30	RODA® Lite White 07
	0,90	RODA® Lite Blue 07
	0,25	RODA® Lite Ochre 07
	0,10	RODA® Lite Fuchsia 07

↑ FEDERAL TPG 15-0523

Drum	4,00 % SELLASOL® TN-FF liq	
	1,00 % SELLA® Fast Beige A	
	0,10 % SELLA® Fast Orange A	
Finishing	87,40	RODA® Lite White 07
	0,40	RODA® Lite Black SH
	11,83	RODA® Lite Ochre 07
	0,40	RODA® Lite Fuchsia 07

↑ DUKE TPG 14-1110

All RODA® Lite 07 formulations are applied on no-dyed crust and quantities are expressed in grams per liter.





TARGET:

- Safari-style travel set (with crocodile-embossed moccasins and backpack)
- Clutch bags with an embossed flap
- Soft shopping bag with embossed reptile leather







Miss Sunshine

↑ **FIREFLIES** TPG 17-1463

↑ **SING** TPG 17-1349

↑ **GRENADE** TPG 15-1062

↑ **ROMANCE** TPG 14-1133

www.tfl.com





Miss Sunshine

Drum	1,50 % SELLA® Fast Red A	3,75 % SELLA® Fast Orange A
Finishing	8,00	RODA® Lite White 07
	45,00	RODA® Lite Yellow 07
	43,00	RODA® Lite Orange 07
	6,00	RODA® Lite Red 07

↑ FIREFLIES TPG 17-1463

Drum	0,50 % SELLA® Fast Yellow R	2,50 % SELLA® Fast Orange A
Finishing	8,00	RODA® Lite White 07
	47,00	RODA® Lite Yellow 07
	40,00	RODA® Lite Orange 07

↑ SING TPG 17-1349

Drum	2,50 % SELLA® Fast Yellow R	0,50 % SELLA® Fast Orange A
Finishing	56,00	RODA® Lite Yellow 07
	44,00	RODA® Lite White 07
	4,00	RODA® Lite Orange 07

↑ GRENADE TPG 15-1062

Drum	2,00 % SELLASOL® TN-FF Liq	1,50 % SELLA® Fast Orange A	1,50 % SELLA® Fast Yellow A
Finishing	35,00	RODA® Lite Yellow 07	
	40,00	RODA® Lite White 07	
	7,00	RODA® Lite Orange 07	
	0,05	RODA® Lite Black SH	

↑ ROMANCE TPG 14-1133

All RODA® Lite 07 formulations are applied on no-dyed crust and quantities are expressed in grams per liter.





TARGET:

- Perforated and punched sneakers
- Unisex gym shoes
- Soft sports bags







Pastell Princess

↑ **FRESH** TPG 12-5303

↑ **JANELLE** TPG 12-0817

↑ **KATY** TPG 13-1026

↑ **CHERYL** TPG 12-0752

www.tfl.com





Pastell Princess

Drum	4,00 % SELLASOL® TN-FF Liq	
	1,00 % SELLA® Star Sahara	
	0,05 % SELLA® Fast Green 2GB	
Finishing	98,20	RODA® Lite White 07
	0,25	RODA® Lite Blue 07
	1,30	RODA® Lite Ochre 07
	0,30	RODA® Lite Fuchsia 07

↑ FRESH TPG 12-5303

Drum	4,00 % SELLASOL® TN-FF liq	
	0,30 % SELLA® Fast Havana E	
	0,10 % SELLA® Fast Brown C-G	
Finishing	90,93	RODA® Lite White 07
	0,10	RODA® Lite Blue 07
	0,90	RODA® Lite Ochre 07
	0,15	RODA® Lite Fuchsia 07

↑ JANELLE TPG 12-0817

Drum	4,00 % SELLASOL® TN-FF Liq	
	0,30 % SELLA® Fast Orange A	
Finishing	90,00	RODA® Lite White 07
	3,00	RODA® Lite Ochre 07
	4,00	RODA® Lite Orange 07
	1,00	RODA® Lite Lemon 07

↑ KATY TPG 13-1026

Drum	3,50 % SELLA® Fast Yellow 4GL	
	0,50 % SELLA® Fast Yellow R	
Finishing	10,00	RODA® Lite White 07
	90,00	RODA® Lite Lemon 07

↑ CHERYL TPG 12-0752

All RODA® Lite 07 formulations are applied on no-dyed crust and quantities are expressed in grams per liter.





TARGET:

- Soft moccasins with extra-light soles
- Windbreaker-style jackets and casual shoes
- Multi pocketed safari jackets with walking shoes







Athletic Cyborg

↑ **CARDIFF** TPG 19-3953

↑ **JESSIE** TPG 17-1563

↑ **PRINCE** TPG 16-5942

↑ **CRICKET** TPG 12-4306

www.tfl.com





Athletic Cyborg

Drum	4,00 %	SELLA® Fast Blue A
	0,30 %	SELLA® Fast Bordeaux A
Finishing	18,65	RODA® Lite White 07
	49,85	RODA® Lite Blue 07
	0,10	RODA® Lite Violet Brown 07
	31,50	RODA® Lite Fuchsia 07

↑ **CARDIFF** TPG 19-3953

Drum	4,00 %	SELLA® Fast Red A
Finishing	12,00	RODA® Lite White 07
	40,00	RODA® Lite Yellow 07
	40,00	RODA® Lite Orange 07
	4,00	RODA® Lite Red 07

↑ **JESSIE** TPG 17-1563

Drum	0,80 %	SELLA® Fast Yellow 4GL
	3,20 %	SELLA® Fast Green 2GB
Finishing	39,00	RODA® Lite White 07
	5,00	RODA® Lite Black SH
	6,60	RODA® Lite Blue 07
	24,50	RODA® Lite Lemon 07

↑ **PRINCE** TPG 16-5942

Drum	4,00 %	SELLASOL® TN-FF Liq
	0,50 %	SELLA® Fast Beige AR
	0,10 %	SELLA® Fast Grey NL
Finishing	98,10	RODA® Lite White 07
	0,10	RODA® Lite Blue 07
	0,70	RODA® Lite Ochre 07
	0,30	RODA® Lite Fuchsia 07

↑ **CRICKET** TPG 12-4306

All RODA® Lite 07 formulations are applied on no-dyed crust and quantities are expressed in grams per liter.



With a keen eye on how tastes are forever changing in everything from new technologies to lifestyles, our latest Living Trends updates the focus on the home, as the nerve centre of our world. The home may be our private haven, but it is also the place where we work, study and have a good time.

The keyword is freedom; freedom to be daring with colours and to have fun with substrates and textures, in order to create strikingly different ambiances to cope with the day-to-day frenzy of constantly adapting our homes to suit our needs, moods and the seasons.

Such a changeable, versatile setting cries out for hybrid, takeaway furnishings that go with everything, such as moveable soft nappa calfskin armchairs complemented by cushions featuring geometric designs and patterns inspired by the biggest designer names from the 1980s, bookcase lights covered with soft nubuck floater calfskin dyed in vibrant, stain-proof colours, and consoles and drop-leaf tables covered with water-repellent leather where we can enjoy our meals and keep all our essential bits and bobs within easy reach.

Modern homes keep getting smaller so, make way for smart, multi-purpose, compact furniture that takes up no room at all. Ideal is a kitchen table with a reversible top with laminate wood on one side and vegetable-tanned calfskin in neutral tones on the other that can double as an office desk, or the tops of gourmet counters that can be extended to accommodate niches by the hob that are covered with leathers finished with two-tone brushed-on effects.

In the living room sofas can be personalised into an infinite number of seating solutions with maxi calf split cushions, ink-jet printed to brighten up the made-to-measure comfort. Why not intersperse these with table tops featuring bull hide fronts retanned with vegetable products to be matched with tropical woods or multicoloured marble, and relaxation areas covered with soft full grain leathers dyed in bright, flashy colours.

Shelves covered with nubuck surfaces micro-embossed with goat grains and finished with waxy translucent effects also act as seating spaces and steps to the upper levels, maybe even mezzanines which are so back in vogue. Mezzanines maximise space in any home and are fabulous areas for soft long-hair rugs, such as yak or Tibetan goat, framed with soft intertwined lambskin.

Finally, simple, natural materials are all the rage again in the bedroom. Pure cotton or pure linen for the pillow cases teamed-up with extra-light duvets, cashmere blend throws and soft suede goatskin cushions that are velvety and silky soft to the touch. The statement piece is a divan bed with a removable quilted fabric covering matched with a capitonné headboard styled in extra-soft nappa calfskin.

The coordinated soft furnishings of choice are strictly recyclable and compostable. They must be environmentally friendly throughout their life, from production to post-consumer disposal, so we advise the tanning industry to publicise and promote every innovation that offers a responsible solution for consumers who are now increasingly more aware of their planet. As we embrace the concept of ethical design, tanneries should promote new tanning products that are free from heavy metals and solvents; these can be dyed in warm, beautifully burnished nuances and accompanied by a polychromatic choice of green hues worthy of a boreal forest.

THEMES:

- Violet Rhapsody
- Velvet Underground





Violet Rhapsody



TARGET:

- Small capitonné armchairs
- Leather lined chests of drawers
- White lacquered wooden table tops for living rooms

 Violet Rhapsody

www.tfl.com





Violet Rhapsody

↑ **FREAKY** TPG 16-3823

↑ **DRAKE** TPG 16-3320

↑ **FEELING** TPG 15-1423

↑ **BENNY** TPG 14-2710

www.tfl.com





Violet Rhapsody

Drum	4,00 % SELLASOL® TN-FF liq	
	1,00 % SELLA® Fast Navy A	
	0,30 % SELLA® Fast Red F	
Finishing	86,30	RODA® Lite White 07
	1,70	RODA® Lite Blue 07
	0,60	RODA® Lite Red Violet 07
	11,00	RODA® Lite Fuchsia 07

↑ FREAKY TPG 16-3823

Drum	2,00 % SELLASOL® TN-FF Liq	
	0,20 % SELLA® Fast Red F	
Finishing	80,30	RODA® Lite White 07
	0,10	RODA® Lite Blue 07
	7,43	RODA® Lite Red Violet 07
	12,45	RODA® Lite Fuchsia 07

↑ DRAKE TPG 16-3320

Drum	4,00 % SELLASOL® TN-FF Liq	
	0,70 % SELLA® Fast Red RTN	
	3,50 % SELLA® Fast Orange A	
Finishing	60,00	RODA® Lite White 07
	35,00	RODA® Lite Fuchsia 07
	2,50	RODA® Lite Yellow 07

↑ FEELING TPG 15-1423

Drum	2,00 % SELLASOL® TN-FF Liq	
	0,20 % SELLA® Fast Red RTN	
Finishing	94,53	RODA® Lite White 07
	0,89	RODA® Lite Ochre 07
	0,47	RODA® Lite Red 07
	4,11	RODA® Lite Fuchsia 07

↑ BENNY TPG 14-2710

All RODA® Lite 07 formulations are applied on no-dyed crust and quantities are expressed in grams per liter.



Velvet Underground



TARGET:

- Tufted mattresses for outdoor seating
- Headboards for beds and divans

 Velvet Underground

www.tfl.com







Velvet Underground

↑ **LIZAR** TPG 14-4317

↑ **TAYLOR** TPG 15-4323

↑ **SYMPHONY** TPG 16-4725

↑ **SUGAR** TPG 17-4023

www.tfl.com





Velvet Underground

Drum	4,00 % SELLASOL® TN-FF Liq	
	0,20 % SELLA® Fast Blue BBN	
Finishing	97,20	RODA® Lite White 07
	1,00	RODA® Lite Blue 07
	0,80	RODA® Lite Ochre 07
	1,00	RODA® Lite Fuchsia 07

↑ LIZAR TPG 14-4317

Drum	2,00 % SELLASOL® TN-FF Liq	
	0,70 % SELLA® Fast Blue BBN	
	0,01 % SELLA® Fast Green GM	
Finishing	92,16	RODA® Lite White 07
	4,81	RODA® Lite Blue 07
	0,29	RODA® Lite Ochre 07
	2,74	RODA® Lite Red Violet 07

↑ TAYLOR TPG 15-4323

Drum	2,00 % SELLASOL® TN-FF Liq	
	0,40 % SELLA® Fast Turquoise 2BL	
Finishing	98,00	RODA® Lite White 07
	4,00	RODA® Lite Blue 07
	0,10	RODA® Lite Fuchsia 07
	0,10	RODA® Lite Ochre 07

↑ SYMPHONY TPG 16-4725

Drum	1,20 % SELLA® Fast Blue 4GL	
	0,30 % SELLA® Fast Navy G	
Finishing	67,24	RODA® Lite White 07
	8,36	RODA® Lite Blue 07
	22,28	RODA® Lite Violet Brown 07
	2,12	RODA® Lite Fuchsia 07

↑ SUGAR TPG 17-4023

All RODA® Lite 07 formulations are applied on no-dyed crust and quantities are expressed in grams per liter.





