



Inspiring – TFL Colour Trends

» Autumn-Winter 2020–21

TFL – Great chemicals. Excellent advice.

TFL's seasonal fashion inspirations



Colour Trend Catalogue for the leather industry

Welcome to TFL's new Colour Trend Catalogue for the season Autumn-Winter 2020–21. In this brochure we present the colour trends for leather garment, footwear, accessories and upholstery.

In the following pages we will highlight our SELLA® colour range. SELLA® dyes are anionic powder dyes specially selected for the drum dyeing of all article types.

TFL presents the fashion colour trends for leather garment, footwear, accessories and upholstery.

We have divided the colour trends into “Wearing” and “Living”, devoting a section to each within the publication. Wearing comprises inspirations and colour trends for garments, footwear and accessories. The Living section features all colours that will decorate the season's interior design. Advantages for TFL customers: knowledge of the future colour preferences and trends helps designers, manufacturers and tanners to stay one step ahead of the market. In combination with the fashion colour trends, TFL provides information about the appropriate dyes and dye applications.

The products provide many advantages such as:

- brilliant and intense shades
- good general fastness properties
- excellent cost/performance ratio

In addition, we present the TFL RODA® Lite 07 casein-free range of finely dispersed, anionic water-based pigments with overall good fastness properties and excellent covering power. RODA® Lite 07 pigments can be used for shoe and leather goods, as well as upholstery and garment leathers.

TFL hopes you will find this catalogue of real value in your day-to-day decision making on colour.
www.tfl.com



Wearing

The new world is moving at a staggering pace and new fashion, which is one of its many languages, stands comfortably behind all of this, trying to interpret the desire of new generations to get rid of everything that's old and to clear the way for the new.

The key players of the future will want leather to be “all over us”, so much so that in the future we can imagine that calfskin shoes and lambskin clothing will be used like a film, moulded to the body; see for example, the new helmet-shaped headphones that help us experience new virtual realities.

THEMES:

- Pop Pull-Up
- Aborigini
- Duran Ballet
- Inflatable-Art
- Dorian Gray

The digital revolution has invaded every aspect of life and starting from the catwalks, fashion is targeting new generations of “glamorous digital natives”, eternal vagabonds in extremely glossy sneakers, pulling brightly coloured suitcases, always connected to the net, always health-conscious and eco-trendy.

The fashion industry has immediately caught onto the sustainability trend, adopting terms such as ethics, circular economy and biodiversity, and translating them into new collections made with natural or biodegradable materials, that have quickly sold out online and/or in store.

Pop Pull-Up

The design features Arabic and Russian influences. Dynamic reptile patterns for crocodile-inspired leather.

Pull-up effects presented on chrome-free skins and hides.

Trends: As a natural material, leather pleases our senses in a way that not many materials can. In support of the biological basis of leather, a number of renewable products are highlighted which are used to create the natural sensation of chrome-free oily and waxy pull up articles. Pre-tanning with SELLATAN® LI-G Liq followed by re-tanning with the vegetable extract containing SELLATAN® TMC, in combination with the natural filling agent SELLASOL® MI, provides the leather with a full and round body. The powerful softening agents CORIPOL® AT, CORIPOL® SG and CORIPOL® SV are composed of renewable materials, and are used to support the development of pull up effects. Finishing is carried out on the roller-coater with either RODA® Wax 33 Conc or RODA® Wax 2009/N, before embossing with a reptile plate and a final application of RODA® Pur 5427/N, for brightness.

TARGET:

- Unisex mountain boots
- Running shoes with double rubber sole
- Portfolio bag



MINKS
TPX 18-1048



SAVOY
TPX 18-1142



FARMER
TPX 18-0928



MUSTAFA
TPX 19-1230



Aborigini

Ethnic inspiration. The style is influenced by patterns featured in Australian Aboriginal and Samoan tattoos.

Split turned into nappa with RODA® Micro Technology.

Trends: Water-repellent splits remain attractive evergreen fashion highlights, featuring TANNESCO® CPR Liq as re-tanning and capping agent, which allows brilliant and intense shades to be created. Softening with DRYWALK® WAM and filling/sealing with MAGNOPAL® PFS which, after vacuum drying leads to a short, shiny nap. RODA® Mod 5129 applied in the finishing is not only intensifying the shade but is also helping to disguise natural defects.

The new innovative RODA® Micro Technology is elevating suede splits and corrected grain leathers into countless, elegant and high-value nappa articles. Experience the covering power of open structured surfaces by using RODA® Micro Technology to create your own leather masterpiece!

TARGET:

- Belts
- Shoe laces
- Travel bag



COTTO
TPX 15-1150



SICULO
TPX 16-1448



FERRARI
TPX 19-1763



SALSA
TPX 19-1250





Duran Ballet

The 'New Wave' lifestyle inspired by the 1980's. Emblematic denim steals the show with shades of light and dark blue.

TFL ECO TEC creates extraordinary Nubuck.

Trends: Leather articles are highly valued for their durability and versatility, manufactured in a sustainable way to protect the environment and consumers. TFL ECO TEC helps to reduce the load on the effluent while minimising the amount of process water. The Low sulfide Tec, with PELLVIT® LSG, ERHAVIT® LSU and ERHAVIT® LSX, is as much a part of the well-established TFL ECO TEC technology as the ammonium-free de-liming and bating with DERMASCAL® CD and OROPON® MT. Nubuck articles with intense, brilliant and level dyeing are made by integrating the biodegradable surfactants BORRON® DLS and BORRON® SCA into beamhouse processes, along with the low salt pickling system based on SELLATAN® PA liq.

Enhancing nubuck in different ways by embossing and creating contrasts with RODA® Wax 5044 applied on the roller-coater; or RODA® Fix 6271-B for a tipping effect, in combination with RODA® Cor HTP transparent pigments or SELLA® Derm M2 liquid dyes.

TARGET:

- Para boots
- Men's lace-up derby shoes
- Multi-purpose rucksack



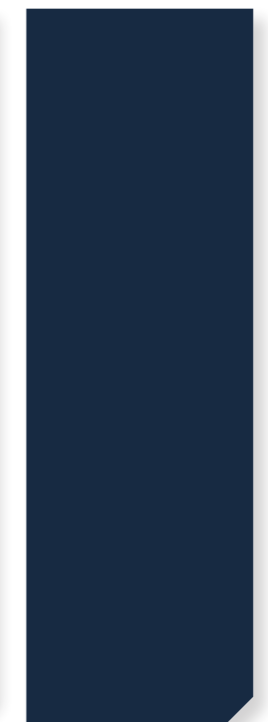
VELA
TPX 17-1502



TYPHOON
TPX 19-4234



WAVE
TPX 19-3906



OCEANO
TPX 19-3920

Inflatable-A t

The theme is primarily inspired by the softness and voluminous feel of nappa leather with natural shades of green and greyish brown. Elegant leather goods for men and women.

Tightness, temper, fullness and surface touch – the classic beauty is here to stay!

Trends: Shoe & Leather Goods and Garment accessories not only need to withstand daily use, but also keep their shape and age with style. The classic beauty of the inflatable-art articles is delivering exactly these characteristics.

Tightness after milling combined with inner softness and fullness isn't a contradiction. The combination of MAGNOPAL® PS-N, PGN and TGR imparts tightness, grain elasticity and a flat milling pattern; whereas SELLATAN® TMC and GS-B Liq provide fullness with a dispersing effect. Fatliquoring with the natural softening power of CORIPOL® SV and BZE-N, combined with the synthetic lubricating effect of CORIPOL® DX-1202, results in a round and tight crust with a warm, nourished handle suitable for long milling.

A natural-look, softness and a pleasant touch are achieved by the use of the non-ionic oil ground, RODA® Oil AA 4040 & RODA® Wax Mono, before small defects are covered in the pre-bottom with RODA® Care NC. Light and simple finishing with the universal pre-ground RODA® Ground KCF 647 and base coat RODA® Base AF-B, are combined with the RODA® Poliperl Iridescent range, which imparts a mother of pearl effect.

TARGET:

- Over-sized blouson
- Women's boots with rubber sole
- Unisex gym wear rucksacks



CONGO
TPX 18-1160



BAVIERA
TPX 18-0830



SELCE
TPX 18-0933



WILDT
TPX 19-6110





Dorian Gray

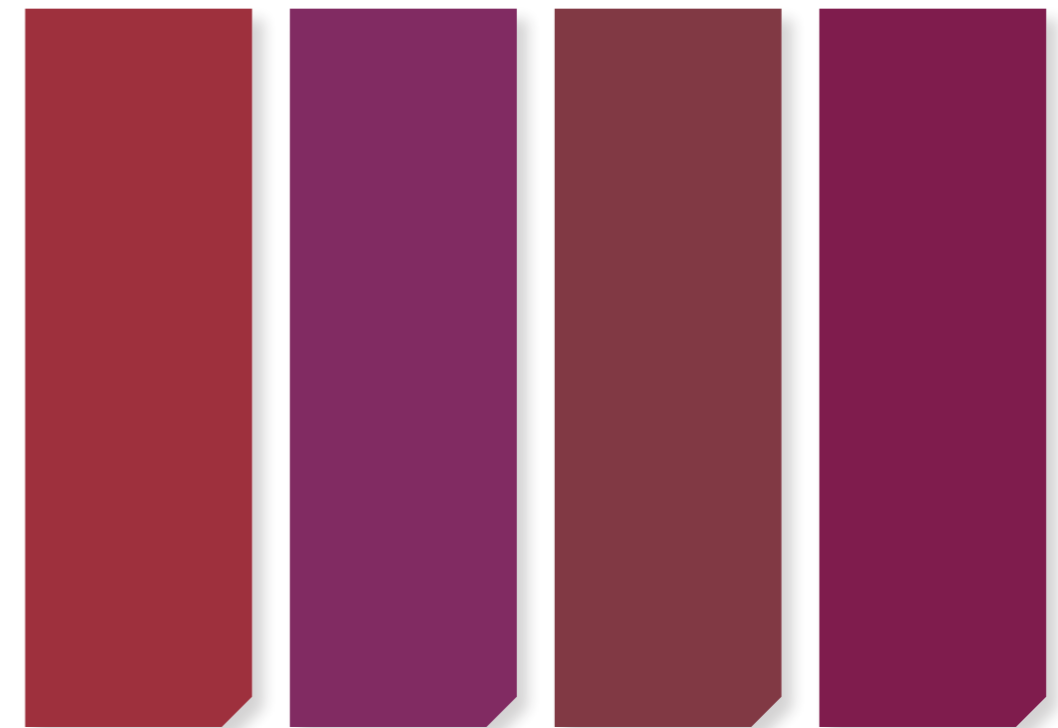
A nod to the 1920s with elegant, bright colours ensuring a sophisticated touch.

Shiny fashion articles with deep transparency.

The variety of Patent leather articles is wide, colourful and offers countless opportunities to create highly-fashionable, iconic articles. However, the requirements leather needs to fulfil today are tough and are getting more and more challenging, in order to comply with the demands from local governments, brands and manufacturers, regarding restricted substances. Therefore, enjoy high gloss transparency and fastness properties, with the lowest possible VOC emissions, by using RODA® Pur 5805/N2 for classic patent finishing, and RODA® Fix 5090 to create a soft naplak effect after milling. TANNESCO® FC provides good tightness without affecting softness. SELLATAN® RP and MAGNOPAL® IPF give uniform filling, especially on bellies, and allow clear and brilliant shades to be created, whilst fatliquoring with CORIPOL® SB and CORIPOL® SV results in a tight, round and bouncy crust. The leather is kept firm with an impregnation coat using RODA® Cryl 5037 and the finish performance is built-up with RODA® Base 4068, before fixing with RODA® Pur 5805/N2 for maximum gloss, or RODA® Fix 5090 for softer articles.

TARGET:

- Evening pumps
- Soft cross-body bags
- Moccasins in nubuck, with rubber soles



POMPEI
TPX 18-1658

MOSTO
TPX 19-2431

POSADA
TPX 19-1532

ANEMONE
TPX 19-2033

Living

Italian luxury, handmade, romanticism 3.0, immersed in greenery: these are the four sources of inspiration that guided us in narrating the new TFL 2020-21 winter collection.

The first theme introduces the most flourishing Living sector, in other words, furnishing accessories, cushions, coffee services, vases, which have helped us discover a new “verve” for vegetable-tanned leathers in neutral colours and pastel shades. Used as finishing materials alongside other fabrics or else, taking centre stage for large trays, lamp bases and stools, including crocodile print versions.

THEMES:

- Magnagrecia
- Regency

For the handmade theme, we took a journey through the culture of native Americans, rediscovering and reassessing the use of split calfskin and goatskin suede, in shades of sunburnt yellow, braided by hand, with real reptile skin or cow print leathers that look worn and used.

Our third theme is the very essence of 1950s elegance, in which 'bon ton' was the key trend, rich in precious detail and shades of pearly sugared almonds. This romantic mood can be found on all padded surfaces with sofas upholstered in soft nubuck, dusted with talc-touch waxes, polished nappa leather cabinets with pearl reflexes, like romantic pre-Raphaelite paintings, and side tables in plissé-effect brushed calfskin that frame the edges of seating or screens, that define spaces interspersed with mirror-effect panels.

By being immersed in greenery we mean a living space or work environment that has been designed like a botanical garden where light, transparency, greenery and weightlessness are key. In this open space context, the air sculpts items, and materials favour the use of the finest lambskin and calfskin nappa leather for innovative industrial design items; macro-pouffes in soft printed deerskin or kidskin nappa leather, combined with printed pony-skin and suede split patchwork rugs and polished green vegetable-tanned calfskin seating, hand-buffed with oily reflexes.

Magnagrecia

Influenced by the Ancient Greeks, this theme offers a fabulously feminine feel and super soft, bright colours.

Classic meets performance.

Trends: Supple, natural, milled, soft nappa with exceptional fullness and roundness is suitable for many upholstery applications which require the highest performance, including automotive. These tight and mellow nappa articles can be made free of vegetable extracts by using SELLATAN® RP and MAGNOPAL® IPF in order to provide exceptional heat and humidity aging features; so all vivid, brilliant and pastel shades can profit.

The combination CORIPOL® LEO, CORIPOL® AV and MAGNOPAL® PS-N provides inner softness without creating looseness; ensures an overall good fastness profile and delivers low odour emissions by using the washing auxiliary SELLA® Tec DEO.

RODA® Care 5754 and RODA® Car B 34/N are used as basecoats to ensure good coverage with maximum cutting utilization and softness. RODA® Car P pigments are embedded in the basecoat layer, offering the best possible protection against UV and heat exposure, to make these leather masterpieces suitable for high performance articles.

TARGET:

- Leather trays
- Upholstery
- Interwoven leather-reptile side tables



SCIROCCO
TPX 15-1317



MOIRÉ
TPX 15-1327



GIGLIO
TPX 16-1327



CITRUS
TPX 14-0955





Regency

Influenced by traditional royal colours like purple and red in strong, vibrant tones for your home.

Experience the highest comfort, provided by the pronounced natural grain structure of Zebu hides.

Trends: Leather was and will always be an exclusive, fashionable material for Living accessories. The unique combination of Zebu hides treated with fine-tuned processes result in a comfortable and price-less article with a warm touch, natural smell and unique floating surface structure.

Requirements combining the highest softness with the lowest impact on weight can be fulfilled by applying CORIPOL® LE in combination with MAGNOPAL® SOF and MAGNOPAL® IPF, and the typical pebbled grain structure of the floater article is achieved with the astringent syntan, SELLATAN® HAT Liq. Finishing is further enhancing the unique characteristic of the article line Regency. The use of the cationic compact ground, RODA® Ground K 4038/F, is followed by another soft, good feeling compact base coat, RODA® Base AF-B; which is finally fixed with the topcoat, RODA® Fix 6271-B.

TARGET:

- Padded pouffes
- Divans for open-space living
- Shopper bag



SOLPHURO
TPX 14-0755



CYCLAMEN
TPX 16-3118



AMETHYST
TPX 17-3628



ULTRAVOX
TPX 18-3949



Less staining – improved clean ability

Easy care upholstery

As featured in TFL's Colour Trends catalogue, Spring-Summer 2020 (theme: "Gothic Age"), furniture in light pastel shades like Byron, Foster, Duncan and Fraser are very popular nowadays. It is well known that pastel shades create an inviting and clean atmosphere, and it is equally well known that pastel shades are at high risk of yellowing and soiling, due to exposure to light and everyday wear and tear.

How to keep your leather seats looking good, for longer?

Careful selection of finishing products helps to protect the finish from turning yellow due to intense UV radiation, and a smooth surface morphology helps to avoid the deposition of soil and dirt.

→ **It's all about anti-aging and surface morphology**

Careful product selection protects furniture from yellowing

Full Grain Nappa with natural appearance

- **Upgrading:**
RODA® Care NL
- **Base coat:**
RODA® Base 5073, RODA® Tec AW
- **Top coat:**
RODA® Fix 6271-B, RODA® Fix SR 05 Gloss
- **Touch modifier:**
RODA® Feel S 5796, RODA® Feel SR 5086,
RODA® Feel S 768/N

Corrected Grain Nappa with good coverage and print retention

- **Upgrading:**
RODA® Care NC
- **Base coat:**
RODA® Base 5103, RODA® Tec AW
- **Top coat:**
RODA® Fix 6271-B, RODA® Fix SR 05 Gloss
- **Touch modifier:**
RODA® Feel S 5796, RODA® Feel SR 5086,
RODA® Feel S 768/N



Glossary Wet-end

CORIPOL® GU – Garment & Upholstery fatliquor, for pronounced softness

This new fatliquor imparts an outstanding fluffy inner softness with a nourished surface touch and is ideal for all kinds of soft, light-weight leathers. CORIPOL® GU features very good heat yellowing and light fastness properties, and imparts a uniform and fine milling pattern to articles from both wet-blue & FOC origin. All of the above is achieved with the added bonus that the product is neutral in odour!

MAGNOPAL® IPF – Innovative technology for lightweight leathers

Filling empty and loose structured hides and skins is more important than ever; especially with declining quality. Traditional tanning agents and fillers are by far too small to fill the large empty spaces in the hide structure, especially those in the looser areas of the flanks and bellies.

MAGNOPAL® IPF targets these voids, imparting a pronounced selective filling and as a consequence, an interesting substance-levelling effect, from backbone to belly. In parallel, and just as importantly, the extremely low-density character of MAGNOPAL® IPF allows the tanner to build into his recipes a reduction in specific and area weight ... lightweight with selective filling!

MAGNOPAL® PS-N – High fastness & low emission softening polymer

This softening polymer with high resistance to heat-yellowing is particularly suitable for the production of low-emission (VOC & FOG), and low odour automotive leathers. MAGNOPAL® PS-N is a 'best in class' softening polymer and an important companion product for the following automotive TFL fatliquors:

- CORIPOL® LEO – main fatliquor for low odour automotive articles
- CORIPOL® LE – main fatliquor for low-emission automotive articles
- CORIPOL® ALF & CORIPOL® AT – companion fatliquors to adjust inner softness
- CORIPOL® AV – main fatliquor for embossed articles

SELLATAN® LI-G Liq – Pre-tanning agent with low impact on health and the environment

The majority of chromium-free leathers today are pre-tanned with modified glutaraldehyde (GA) and, although GA is considered a hazardous chemical, in most cases it can be handled in a safe way in order to minimise risks to workers, consumers and the environment. To reduce the risk even further the highly masked pre-tanning agent SELLATAN® LI-G Liq has been added to the range, offering the following features & benefits:

- Reduced GA odour during the pre-tanning process, which improves workplace health and safety
- Excellent penetration and distribution throughout the cross-section – even on full substance pelts
- High efficiency: >95% of the applied GA is exhausted from the bath

TANNESCO® CPR Liq – Versatile mineral tanning agent

Is a masked zirconium complex offering technical solutions as a capping agent, and in pre-tanning and retanning. It reacts mildly when compared with chromium & aluminium sulfate, and the extremely acidic zirconium sulfate. TANNESCO® CPR Liq offers a toxicological and environmentally friendly alternative, when tight grain articles with excellent dyeability are required.



Glossary Finishing

RODA® Fix 5040 Dull

Is a dull NMP-free & NEP-free aqueous top coat with excellent general physical and chemical properties. It gives the leather a dry silky feel; it has a good flow out and a high matting efficiency.

RODA® Wax 5044

Is a special wax suitable for making articles with a very strong burnish and pull-up effect on full grain, buffed grain and splits. Chrome leathers, after-treated with RODA® Wax 5044, are acquiring a strong vegetable character.

RODA® Ground RECO 5

Is a polishable shoe pre-bottom, suitable for full or slightly buffed grain leather, which is mainly used to make a very deep classic black article. It can also be used on full grain or slightly buffed leather; where it imparts a very natural looking & fashionable pull-up/aged look.

RODA® Cryl IL

Is a very fine acrylic resin which is mainly used for the impregnation of full grain leathers for shoe upper. It does not harden and does not reduce the reactivity of the leather; leaving the properties of the retanned article unaltered.

RODA® Ground UP-XS

Is a very soft anionic pre-bottom for universal use for full grain and buffed leathers. After the ironing operation, the leather will be well sealed, with a natural velvet touch. It also shows excellent adhesion on the leather grain.

RODA® Ground K 4038/F

Is a soft, polishable, cationic pre-bottom which is particularly suitable for full grain shoe upper articles. It contributes to defect reduction, good adhesion and grain sealing, without loading the finishing. The product also imparts a very natural feel after polishing.

 Colour Trends – Wearing
Autumn-Winter 2020–21

Pop Pull-Up



Aborigini



Duran Ballet



Inflatable-Art



Dorian Gray



 Colour Trends – Living
Autumn-Winter 2020–21

Magnagrecia



Regency





www.tfl.co



Inspiring – TFL Colour Trends

» Autumn-Winter 2020–21



TFL – Great chemicals. Excellent advice.





Wearing

The new world is moving at a staggering pace and new fashion, which is one of its many languages, stands comfortably behind all of this, trying to interpret the desire of new generations to get rid of everything that's old and to clear the way for the new.

The key players of the future will want leather to be "all over us", so much so that in the future we can imagine that calfskin shoes and lambskin clothing will be used like a film, moulded to the body; see for example, the new helmet-shaped headphones that help us experience new virtual realities.

The digital revolution has invaded every aspect of life and starting from the catwalks, fashion is targeting new generations of "glamorous digital natives", eternal vagabonds in extremely glossy sneakers, pulling brightly coloured suitcases, always connected to the net, always health-conscious and eco-trendy.

The fashion industry has immediately caught onto the sustainability trend, adopting terms such as ethics, circular economy and biodiversity, and translating them into new collections made with natural or biodegradable materials, that have quickly sold out online and/or in store.

THEMES:

- Pop Pull-Up
- Aborigini
- Duran Ballet
- Inflatable-Art
- Dorian Gray

www.tfl.com







TARGET:

- Unisex mountain boots
- Running shoes with double rubber sole
- Portfolio bag





↑ **MINKS** TPX 18-1048

↑ **SAVOY** TPX 18-1142

↑ **FARMER** TPX 18-0928

↑ **MUSTAFA** TPX 19-1230





Pop Pull-Up

Drum	2,00 % SELLASOL® TN-FF	
	0,50 % INVADERM® LU	
	3,80 % SELLA® Star Tobacco	
	0,20 % SELLA® Star Olive	
Finishing	37,43	RODA® Lite Orange 07
	38,21	RODA® Lite Yellow 07
	19,61	RODA® Lite Lemon 07
	4,73	RODA® Lite Black 07

↑ MINKS TPX 18-1048

Drum	2,00 % SELLASOL® TN-FF	
	0,50 % INVADERM® LU	
	0,50 % SELLA® Star Tobacco	
	2,30 % SELLA® Star Copper	
Finishing	41,12	RODA® Lite Orange 07
	5,19	RODA® Lite White 07
	51,72	RODA® Lite Yellow 07
	1,92	RODA® Lite Black 07

↑ SAVOY TPX 18-1142

Drum	2,00 % SELLASOL® TN-FF	
	0,50 % INVADERM® LU	
	1,30 % SELLA® Star Coffee	
	0,80 % SELLA® Star Olive	
Finishing	26,49	RODA® Lite Blue 07
	51,25	RODA® Lite Ochre 07
	2,76	RODA® Lite Red 07
	19,48	RODA® Lite Orange 07

↑ FARMER TPX 18-0928

Drum	2,00 % SELLASOL® TN-FF	
	0,50 % INVADERM® LU	
	3,00 % SELLA® Fast Brown CR	
Finishing	0,27	RODA® Lite Black SH
	14,35	RODA® Lite Ochre 07
	31,69	RODA® Lite Lemon 07
	53,67	RODA® Lite Violet Brown 07

↑ MUSTAFA TPX 19-1230

All RODA® Lite 07 formulations are applied on no-dyed crust and quantities are expressed in grams per liter.





TARGET:

- Belts
- Shoe laces
- Travel bag





↑ **COTTO** TPX 15-1150

↑ **SICULO** TPX 16-1448

↑ **FERRARI** TPX 19-1763

↑ **SALSA** TPX 19-1250





Aborigini

Drum 2,00 % SELLASOL® TN-FF
0,50 % INVADERM® LU
4,00 % SELLA® Fast Orange 2GC

Finishing 6,16 RODA® Lite Orange 07
0,01 RODA® Lite White 07
22,58 RODA® Lite Yellow 07
70,81 RODA® Lite Lemon 07

↑ COTTO TPX 15-1150

Drum 2,00 % SELLASOL® TN-FF
0,50 % INVADERM® LU
0,50 % SELLA® Star Copper
2,80 % SELLA® Fast Orange A

Finishing 27,20 RODA® Lite Orange 07
0,53 RODA® Lite Blue 07
52,84 RODA® Lite Yellow 07
19,41 RODA® Lite Ochre 07

↑ SICULO TPX 16-1448

Drum 2,00 % SELLASOL® TN-FF
0,50 % INVADERM® LU
3,50 % SELLA® Fast Red RTN
0,60 % SELLA® Fast Red F

Finishing 11,11 RODA® Lite White 07
0,01 RODA® Lite Orange Brown 07
84,11 RODA® Lite Red 07
4,77 RODA® Lite Red Violet 07

↑ FERRARI TPX 19-1763

Drum 2,00 % SELLASOL® TN-FF
0,50 % INVADERM® LU
3,50 % SELLA® Fast Brown HC
0,50 % SELLA® Fast Brown HE-M

Finishing 62,88 RODA® Lite Lemon 07
1,20 RODA® Lite Black 07
0,01 RODA® Lite Ochre 07
35,84 RODA® Lite Red 07

↑ SALSA TPX 19-1250

All RODA® Lite 07 formulations are applied on no-dyed crust and quantities are expressed in grams per liter.





TARGET:

- Para boots
- Men's lace-up derby shoes
- Multi-purpose rucksack





↑ **VELA** TPX 17-1502

↑ **TYPHOON** TPX 19-4234

↑ **WAVE** TPX 19-3906

↑ **OCEANO** TPX 19-3920



 Duran Ballet

Drum	2,00 % SELLASOL® TN-FF 0,50 % INVADERM® LU 1,00 % SELLA® Fast Grey NL 0,10 % SELLA® Fast Orange A
Finishing	78,38 RODA® Lite White 07 4,81 RODA® Lite Orange Brown 07 10,34 RODA® Lite Violet Brown 07 6,44 RODA® Lite Black 07

↑ **VELA TPX 17-1502**

Drum	2,00 % SELLASOL® TN-FF 0,50 % INVADERM® LU 3,00 % SELLA® Fast Blue BBN 0,50 % SELLA® Fast Green GDN
Finishing	9,40 RODA® Lite White 07 80,38 RODA® Lite Blue 07 0,07 RODA® Lite Black 07 10,13 RODA® Lite Ochre 07

↑ **TYPHOON TPX 19-4234**

Drum	2,00 % SELLASOL® TN-FF 0,50 % INVADERM® LU 0,80 % SELLA® Star Coffee 1,20 % SELLASET® Black BR
Finishing	44,91 RODA® Lite White 07 25,19 RODA® Lite Black SH 18,75 RODA® Lite Blue 07 11,35 RODA® Lite Lemon 07

↑ **WAVE TPX 19-3906**

Drum	2,00 % SELLASOL® TN-FF 0,50 % INVADERM® LU 3,00 % SELLASET® Black BR 1,80 % SELLA® Fast Violet RL
Finishing	3,57 RODA® Lite White 07 69,51 RODA® Lite Blue 07 22,32 RODA® Lite Fuchsia 07 4,59 RODA® Lite Black 07

↑ **OCEANO TPX 19-3920**

All RODA® Lite 07 formulations are applied on no-dyed crust and quantities are expressed in grams per liter.





TARGET:

- Over-sized blouson
- Women's boots with rubber sole
- Unisex gym wear rucksacks





↑ **CONGO** TPX 18-1160

↑ **BAVIERA** TPX 18-0830

↑ **SELCE** TPX 18-0933

↑ **WILDT** TPX 19-6110



 Inflatable-Art

Drum	2,00 % SELLASOL® TN-FF
	0,50 % INVADERM® LU
	1,50 % SELLA® Star Havana
	0,40 % SELLA® Star Tobacco
Finishing	12,87 RODA® Lite Orange 07
	0,34 RODA® Lite Red Brown 07
	0,83 RODA® Lite Black 07
	85,95 RODA® Lite Ochre 07

↑ **CONGO TPX 18-1160**

Drum	2,00 % SELLASOL® TN-FF
	0,50 % INVADERM® LU
	3,00 % SELLA® Star Olive
	1,00 % SELLA® Star Coffee
Finishing	14,63 RODA® Lite Orange 07
	6,70 RODA® Lite White 07
	18,38 RODA® Lite Blue 07
	60,18 RODA® Lite Ochre 07

↑ **BAVIERA TPX 18-0830**

Drum	2,00 % SELLASOL® TN-FF
	0,50 % INVADERM® LU
	2,50 % SELLA® Star Tobacco
	2,00 % SELLA® Star Olive
Finishing	23,16 RODA® Lite Orange 07
	4,08 RODA® Lite White 07
	15,69 RODA® Lite Blue 07
	57,05 RODA® Lite Ochre 07

↑ **SELCE TPX 18-0933**

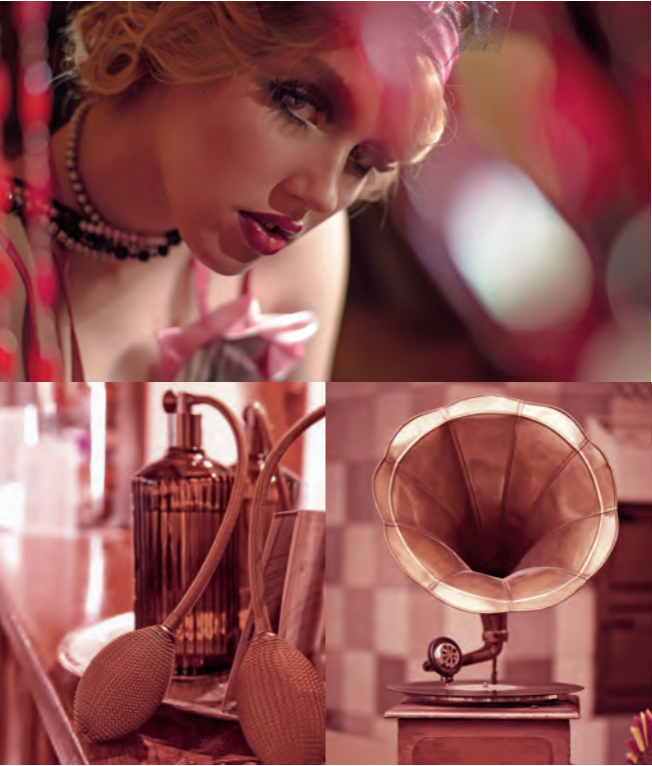
Drum	2,00 % SELLASOL® TN-FF
	0,50 % INVADERM® LU
	2,30 % SELLA® Star Olive
	1,70 % SELLA® Fast Green GDN
Finishing	66,55 RODA® Lite Blue 07
	19,37 RODA® Lite Orange Brown 07
	1,23 RODA® Lite Yellow 07
	12,83 RODA® Lite Violet Brown 07

↑ **WILDT TPX 19-6110**

All RODA® Lite 07 formulations are applied on no-dyed crust and quantities are expressed in grams per liter.



 Dorian Gray



TARGET:

- Evening pumps
- Soft cross-body bags
- Moccasins in nubuck, with rubber soles





↑ **POMPEI** TPX 18-1658

↑ **MOSTO** TPX 19-2431

↑ **POSADA** TPX 19-1532

↑ **ANEMONE** TPX 19-2033





Dorian Gray

Drum	2,00 % SELLASOL® TN-FF
	0,50 % INVADERM® LU
	1,00 % SELLA® Fast Red RTN
	2,00 % SELLA® Fast Bordeaux RVN
Finishing	12,33 RODA® Lite White 07
	52,38 RODA® Lite Red 07
	9,88 RODA® Lite Violet Brown 07
	25,39 RODA® Lite Orange 07

↑ POMPEI TPX 18-1658

Drum	2,00 % SELLASOL® TN-FF
	0,50 % INVADERM® LU
	1,50 % SELLA® Fast Red F
	2,00 % SELLA® Fast Bordeaux RVN
Finishing	14,86 RODA® Lite White 07
	8,71 RODA® Lite Violet Brown 07
	15,44 RODA® Lite Red Violet 07
	60,99 RODA® Lite Fuchsia 07

↑ MOSTO TPX 19-2431

Drum	2,00 % SELLASOL® TN-FF
	0,50 % INVADERM® LU
	2,70 % SELLA® Fast Bordeaux RVN
	0,60 % SELLA® Fast Brown HC
Finishing	20,55 RODA® Lite White 07
	2,92 RODA® Lite Black SH
	50,96 RODA® Lite Red 07
	25,56 RODA® Lite Red Brown 07

↑ POSADA TPX 19-1532

Drum	2,00 % SELLASOL® TN-FF
	0,50 % INVADERM® LU
	1,40 % SELLA® Fast Red F
	2,60 % SELLA® Fast Bordeaux RVN
Finishing	8,30 RODA® Lite White 07
	5,20 RODA® Lite Red Brown CH
	26,71 RODA® Lite Red Violet 07
	59,62 RODA® Lite Fuchsia 07

↑ ANEMONE TPX 19-2033

All RODA® Lite 07 formulations are applied on no-dyed crust and quantities are expressed in grams per liter.



Italian luxury, handmade, romanticism 3.0, immersed in greenery: these are the four sources of inspiration that guided us in narrating the new TFL 2020-21 winter collection.

The first theme introduces the most flourishing Living sector, in other words, furnishing accessories, cushions, coffee services, vases, which have helped us discover a new “verve” for vegetable-tanned leathers in neutral colours and pastel shades. Used as finishing materials alongside other fabrics or else, taking centre stage for large trays, lamp bases and stools, including crocodile print versions.

For the handmade theme, we took a journey through the culture of native Americans, rediscovering and reassessing the use of split calfskin and goatskin suede, in shades of sunburnt yellow, braided by hand, with real reptile skin or cow print leathers that look worn and used.

Our third theme is the very essence of 1950s elegance, in which ‘bon ton’ was the key trend, rich in precious detail and shades of pearly sugared almonds. This romantic mood can be found on all padded surfaces with sofas upholstered in soft nubuck, dusted with talc-touch waxes, polished nappa leather cabinets with pearl reflexes, like romantic pre-Raphaelite paintings, and side tables in plissé-effect brushed calfskin that frame the edges of seating or screens, that define spaces interspersed with mirror-effect panels.

By being immersed in greenery we mean a living space or work environment that has been designed like a botanical garden where light, transparency, greenery and weightlessness are key. In this open space context, the air sculpts items, and materials favour the use of the finest lambskin and calfskin nappa leather for innovative industrial design items; macro-pouffes in soft printed deerskin or kidskin nappa leather, combined with printed pony-skin and suede split patchwork rugs and polished green vegetable-tanned calfskin seating, hand-buffed with oily reflexes.

THEMES:

- Magnagrecia
- Regency







TARGET:

- Leather trays
- Upholstery
- Interwoven leather-reptile side tables





↑ **SCIROCCO** TPX 15-1317

↑ **MOIRÉ** TPX 15-1327

↑ **GIGLIO** TPX 16-1327

↑ **CITRUS** TPX 14-0955





Magnagrecia

Drum	2,00 % SELLASOL® TN-FF
	0,50 % INVADERM® LU
	0,20 % SELLA® Star Tobacco
	0,15 % SELLA® Fast Orange A
Finishing	57,50 RODA® Lite White 07
	31,57 RODA® Lite Lemon 07
	6,05 RODA® Lite Violet Brown 07
	4,87 RODA® Lite Fuchsia 07

↑ **SCIROCCO** TPX 15-1317

Drum	2,00 % SELLASOL® TN-FF
	0,50 % INVADERM® LU
	0,08 % SELLA® Fast Bordeaux RVN
	0,55 % SELLA® Star Copper
Finishing	50,59 RODA® Lite White 07
	14,81 RODA® Lite Blue 07
	34,36 RODA® Lite Lemon 07
	0,25 RODA® Lite Red Violet 07

↑ **MOIRÉ** TPX 15-1327

Drum	2,00 % SELLASOL® TN-FF
	0,50 % INVADERM® LU
	0,60 % SELLA® Star Tobacco
	0,15 % SELLA® Fast Red RTN
Finishing	48,89 RODA® Lite White 07
	17,47 RODA® Lite Ochre 07
	24,63 RODA® Lite Orange Brown 07
	8,99 RODA® Red Violet 07

↑ **GIGLIO** TPX 16-1327

Drum	2,00 % SELLASOL® TN-FF
	0,50 % INVADERM® LU
	0,80 % SELLA® Fast Yellow 4GL
	2,50 % SELLA® Fast Orange 2GC
Finishing	0,98 RODA® Lite Orange 07
	23,75 RODA® Lite White 07
	38,33 RODA® Lite Yellow 07
	36,92 RODA® Lite Lemon 07

↑ **CITRUS** TPX 14-0955

All RODA® Lite 07 formulations are applied on no-dyed crust and quantities are expressed in grams per liter.





TARGET:

- Padded pouffes
- Divans for open-space living
- Shopper bag



www.tfl.com

↑ **SOLPHURO** TPX 14-0755

↑ **CYCLAMEN** TPX 16-3118

↑ **AMETHYST** TPX 17-3628

↑ **ULTRAVOX** TPX 18-3949



Drum	2,00 % SELLASOL® TN-FF 0,50 % INVADERM® LU 1,50 % SELLA® Fast Yellow 4GL 1,80 % SELLA® Fast Yellow R
Finishing	10,30 RODA® Lite White 07 0,08 RODA® Lite Black SH 10,37 RODA® Lite Yellow 07 79,23 RODA® Lite Lemon 07

↑ **SOLPHURO TPX 14-0755**

Drum	2,00 % SELLASOL® TN-FF 0,50 % INVADERM® LU 1,00 % SELLA® Fast Red 2B
Finishing	85,20 RODA® Lite White 07 0,03 RODA® Lite Black SH 0,69 RODA® Lite Red Violet 07 14,07 RODA® Lite Fuchsia 07

↑ **CYCLAMEN TPX 16-3118**

Drum	2,00 % SELLASOL® TN-FF 0,50 % INVADERM® LU 0,80 % SELLA® Fast Red F 0,40 % SELLA® Fast Violet RL
Finishing	56,70 RODA® Lite White 07 12,11 RODA® Lite Blue 07 31,18 RODA® Lite Fuchsia 07

↑ **AMETHYST TPX 17-3628**

Drum	2,00 % SELLASOL® TN-FF 0,50 % INVADERM® LU 4,00 % SELLA® Fast Blue BBN 0,40 % SELLA® Fast Red F
Finishing	5,34 RODA® Lite White 07 0,78 RODA® Lite Black SH 85,67 RODA® Lite Blue 07 9,10 RODA® Lite Fuchsia 07

↑ **ULTRAVOX TPX 18-3949**

All RODA® Lite 07 formulations are applied on no-dyed crust and quantities are expressed in grams per liter.





